



200 South Fourth Street  
DeKalb, Illinois 60115  
815.748.2000 • [cityofdekalb.com](http://cityofdekalb.com)

---

---

## Reports and Statistics

### FY2015

#### **DeKalb Fire Department**

700 Pine Street  
DeKalb, Illinois 60115

815.748.8460 phone  
815.748.8497 fax

[www.cityofdekalb.com/DFD.htm](http://www.cityofdekalb.com/DFD.htm)  
[www.facebook.com/dekalbfire](http://www.facebook.com/dekalbfire)

**DeKalb Fire Department  
FY 2015 Overtime Comparison  
to 2014**

**FY 2015**

	<u>Hours</u>	<u>Average OT Rate</u>	<u>Average Dollars</u>
Acting Pay	4,139.25	\$ 3.140	\$ 12,998.49
Admin	111.00	\$ 46.677	\$ 5,181.11
AM Person Needs	-	\$ 46.677	\$ -
Blizzard	-	\$ 46.677	\$ -
Early Arrival	170.50	\$ 55.293	\$ 9,427.49
EMS	129.75	\$ 46.677	\$ 6,056.30
Fill In	2,879.00	\$ 46.677	\$ 134,382.22
Fire	244.75	\$ 46.677	\$ 11,424.12
Fire Investigation	16.75	\$ 46.677	\$ 781.83
Fire Prevention	30.25	\$ 46.677	\$ 1,411.97
Haz Mat	137.25	\$ 46.677	\$ 6,406.38
Holdover	190.00	\$ 46.677	\$ 8,868.57
Pub Ed	134.50	\$ 46.677	\$ 6,278.02
Radio	1.50	\$ 46.677	\$ 70.02
Recalls	1,477.00	\$ 46.677	\$ 68,941.49
Safety	-	\$ 46.677	\$ -
SCBA	2.00	\$ 46.677	\$ 93.35
Special Event	1,208.75	\$ 39.000	\$ 47,141.25
TRT	54.25	\$ 46.677	\$ 2,532.21
Vehicles	101.00	\$ 46.677	\$ 4,714.35

Totals 11,027.50 \$ 326,709.17

**FY 2014**

	<u>Hours</u>	<u>Using FY15 OT Rate for Direct Comparison of Dollars</u>	<u>Average Dollars</u>
Acting Pay	4,195.50	\$ 3.140	\$ 13,175.13
Admin	120.75	\$ 46.677	\$ 5,636.21
AM Personnel	-	\$ 46.677	\$ -
Early Arrival	171.50	\$ 46.677	\$ 8,005.05
EMS	88.75	\$ 55.293	\$ 4,907.27
Fill In	4,771.25	\$ 46.677	\$ 222,706.20
Fire	52.00	\$ 46.677	\$ 2,427.19
Fire Investigation	45.00	\$ 46.677	\$ 2,100.45
Fire Prevention	47.50	\$ 46.677	\$ 2,217.14
Haz Mat	211.00	\$ 46.677	\$ 9,848.78
Holdover	337.75	\$ 46.677	\$ 15,765.06
Pub Ed	53.25	\$ 46.677	\$ 2,485.53
Radio	22.25	\$ 46.677	\$ 1,038.56
Recalls	1,317.00	\$ 46.677	\$ 61,473.21
Safety	5.00	\$ 46.677	\$ 233.38
SCBA	1.25	\$ 46.677	\$ 58.35
Special Event	1,621.50	\$ 39.000	\$ 63,238.50
TRT	117.75	\$ 46.677	\$ 5,496.18
Vehicles	272.25	\$ 46.677	\$ 12,707.73

Totals 13,451.25 \$ 433,519.94

**DeKalb Fire Department  
FY 2015 Time Off Comparison  
to 2014**

**FY 2015**

	<u>Hours</u>	<u>Average Hourly</u>	
		<u>Rate</u>	<u>Average Dollars</u>
Admin Leave	0	31.1178	\$ -
Bereavement	297	31.1178	\$ 9,241.99
Comp Used	12	31.1178	\$ 373.41
Excused	849.75	31.1178	\$ 26,442.35
Illness - Family	1,859.75	31.1178	\$ 57,871.33
Illness - Self	2,176.00	31.1178	\$ 67,712.33
Illness - Long Term	-	31.1178	\$ -
Kelly Day	11,328.00	31.1178	\$ 352,502.44
Suspension	-	31.1178	\$ -
Light Duty	240.00	31.1178	\$ 7,468.27
Off Duty Injury	633.25	31.1178	\$ 19,705.35
Unpaid Leave	-	31.1178	\$ -
Vacation	17,784.00	31.1178	\$ 553,398.96
Work Comp	<u>2,329.75</u>	31.1178	<u>\$ 72,496.69</u>
<b>Totals</b>	<b>37,509.50</b>		<b>\$ 1,167,213.12</b>

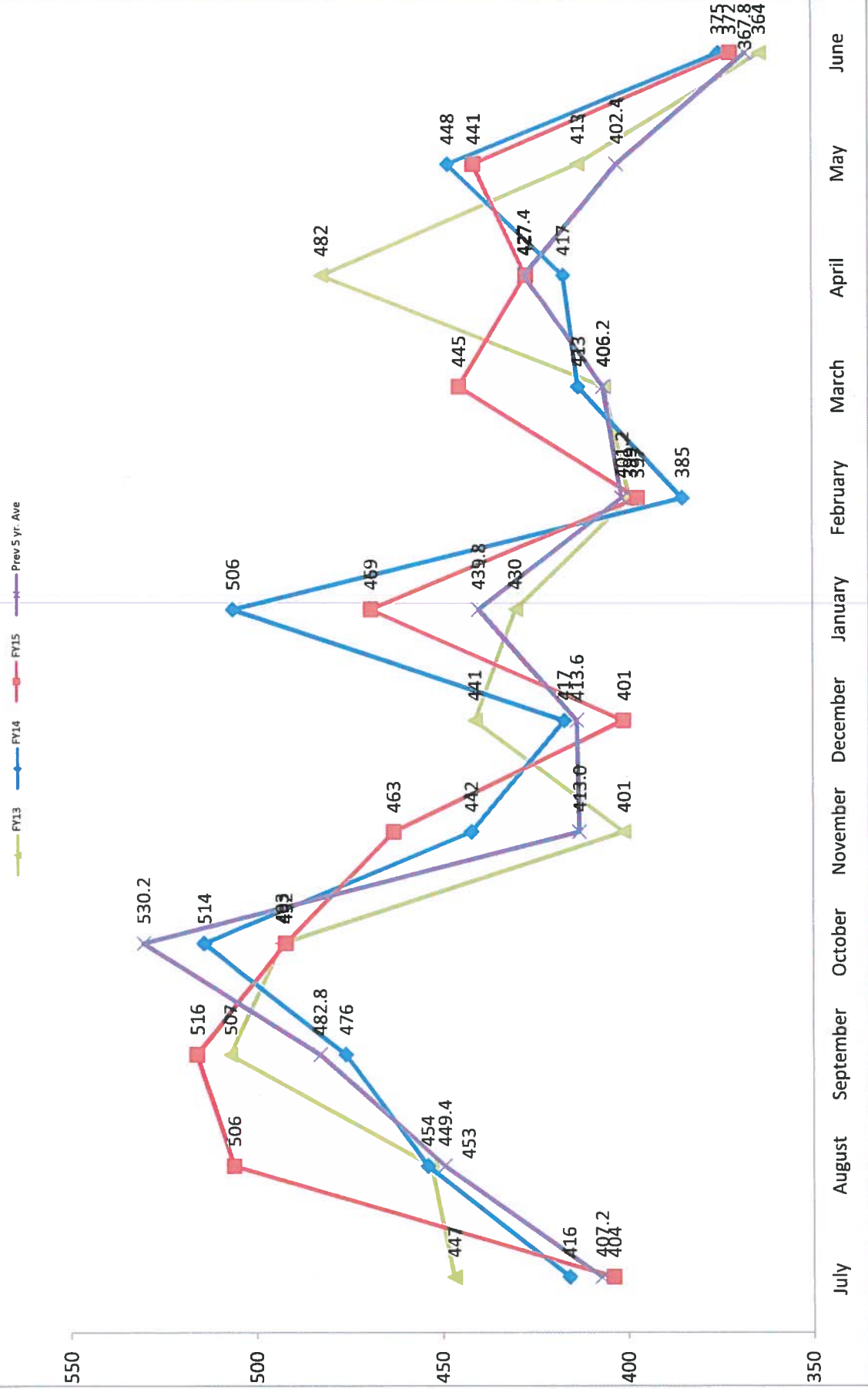
**FY 2014**

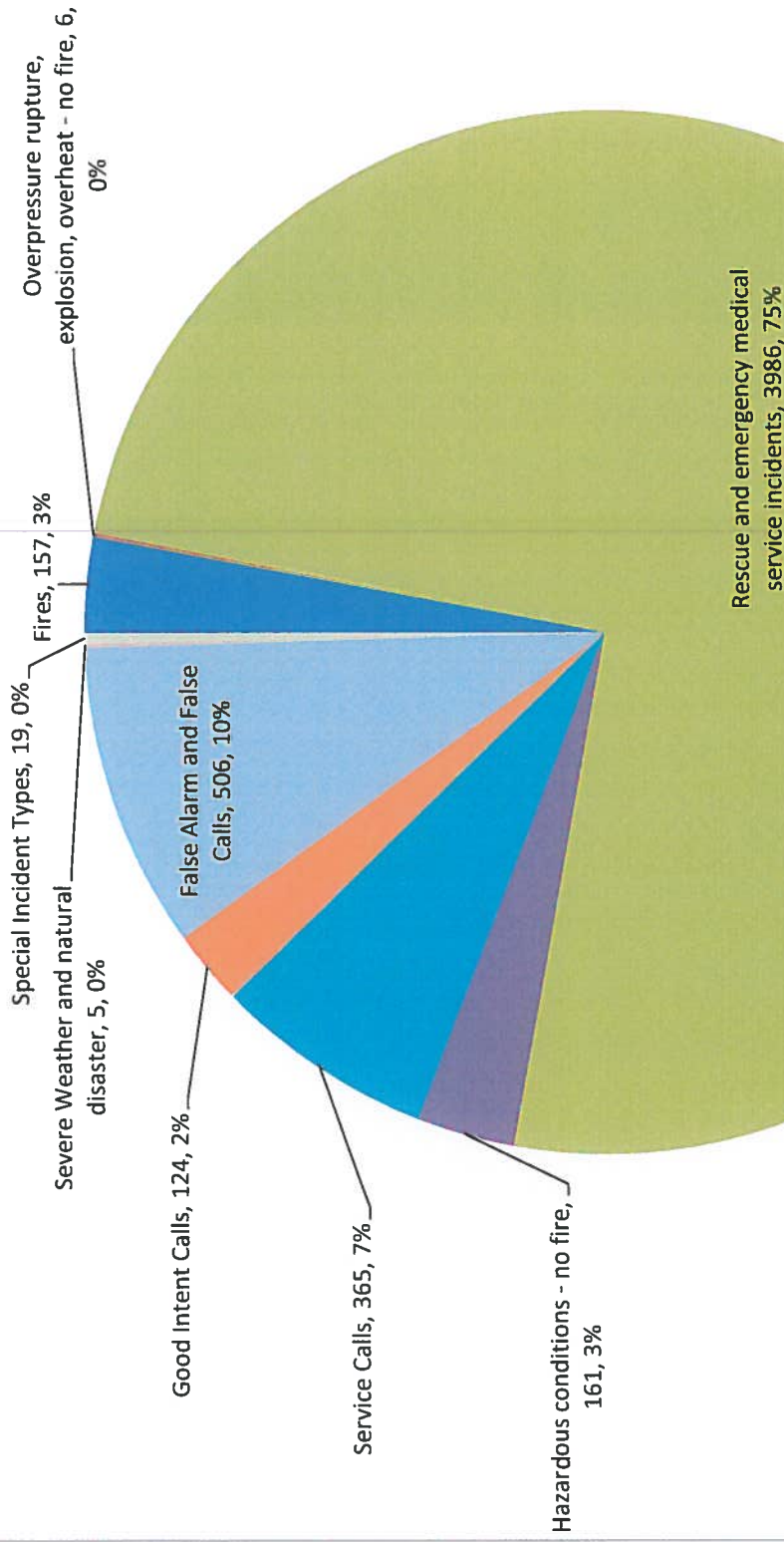
	<u>Hours</u>	<u>Using FY15 Hourly Rate for Direct Comparison of</u>	
		<u>Dollars</u>	<u>Average Dollars</u>
Admin Leave	0	31.1178	0
Bereavement	130	31.1178	\$ 4,045.31
Comp Used	24	31.1178	\$ 746.83
Excused	356.00	31.1178	\$ 11,077.94
Illness - Family	1,320.00	31.1178	\$ 41,075.50
Illness - Self	1,697.00	31.1178	\$ 52,806.91
Kelly Day	11,544.00	31.1178	\$ 359,223.88
Light Duty	1,393.25	31.1178	\$ 43,354.87
Off Duty Injury	2,103.25	31.1178	\$ 65,448.51
Unpaid Leave	-	31.1178	\$ -
Vacation	18,148.00	31.1178	\$ 564,725.83
Work Comp	<u>2,841.00</u>	31.1178	<u>\$ 88,405.67</u>
<b>Totals</b>	<b>39,556.50</b>		<b>\$ 1,230,911.26</b>

## Monthly Requests for Emergency Service

	July	August	September	October	November	December	January	February	March	April	May	June	totals	mid-year
FY95	191	293	254	277	261	253	219	240	204	269	221	201	2883	1529
FY96	258	267	261	279	264	231	235	246	245	243	205	210	2944	1560
FY97	296	287	296	286	257	236	265	213	200	251	225	252	3064	1658
FY98	252	263	279	308	267	223	256	223	264	285	610	247	3477	1592
FY99	264	312	322	371	278	276	289	242	272	273	279	289	3467	1823
FY00	317	312	320	351	234	248	267	273	254	269	291	232	3368	1782
FY01	233	311	351	303	268	256	284	298	277	277	257	298	3413	1722
FY02	320	291	339	344	309	268	270	245	269	331	269	242	3497	1871
FY03	274	363	350	348	314	279	319	305	335	327	291	244	3749	1928
FY04	285	327	335	345	330	245	318	318	277	345	328	281	3734	1867
FY05	264	335	384	416	330	329	320	331	378	343	328	351	4109	2058
FY06	280	353	377	401	377	317	366	315	353	394	329	305	4167	2105
FY07	371	365	458	448	357	342	367	407	415	406	356	368	4660	2341
FY08	388	500	481	460	420	395	384	443	419	348	381	358	4977	2644
FY09	393	471	473	500	427	451	433	377	369	432	338	320	4984	2715
FY10	358	444	481	471	398	438	444	397	375	408	354	358	4926	2590
FY11	384	450	470	593	383	412	390	438	386	416	394	344	5060	2692
FY12	431	446	480	580	441	360	429	387	451	414	403	398	5220	2738
FY13	447	453	507	493	401	441	430	399	406	482	413	364	5236	2742
FY14	416	454	476	514	442	417	506	385	413	417	448	375	5263	2719
FY15	404	506	516	492	463	401	469	397	445	427	441	372	5333	4961
Prev 5 yr. .	407.2	449.4	482.8	530.2	413.0	413.6	439.8	401.2	406.2	427.4	402.4	367.8	5141.0	2696.2
<b>Running totals</b>														
FY14	416	870	1346	1860	2302	2719	3225	3610	4023	4440	4888	5263		
FY15	404	910	1426	1918	2381	2782	3251	3648	4093	4520	4961	5333		
difference	-12	40	80	58	79	63	26	38	70	80	73	70		

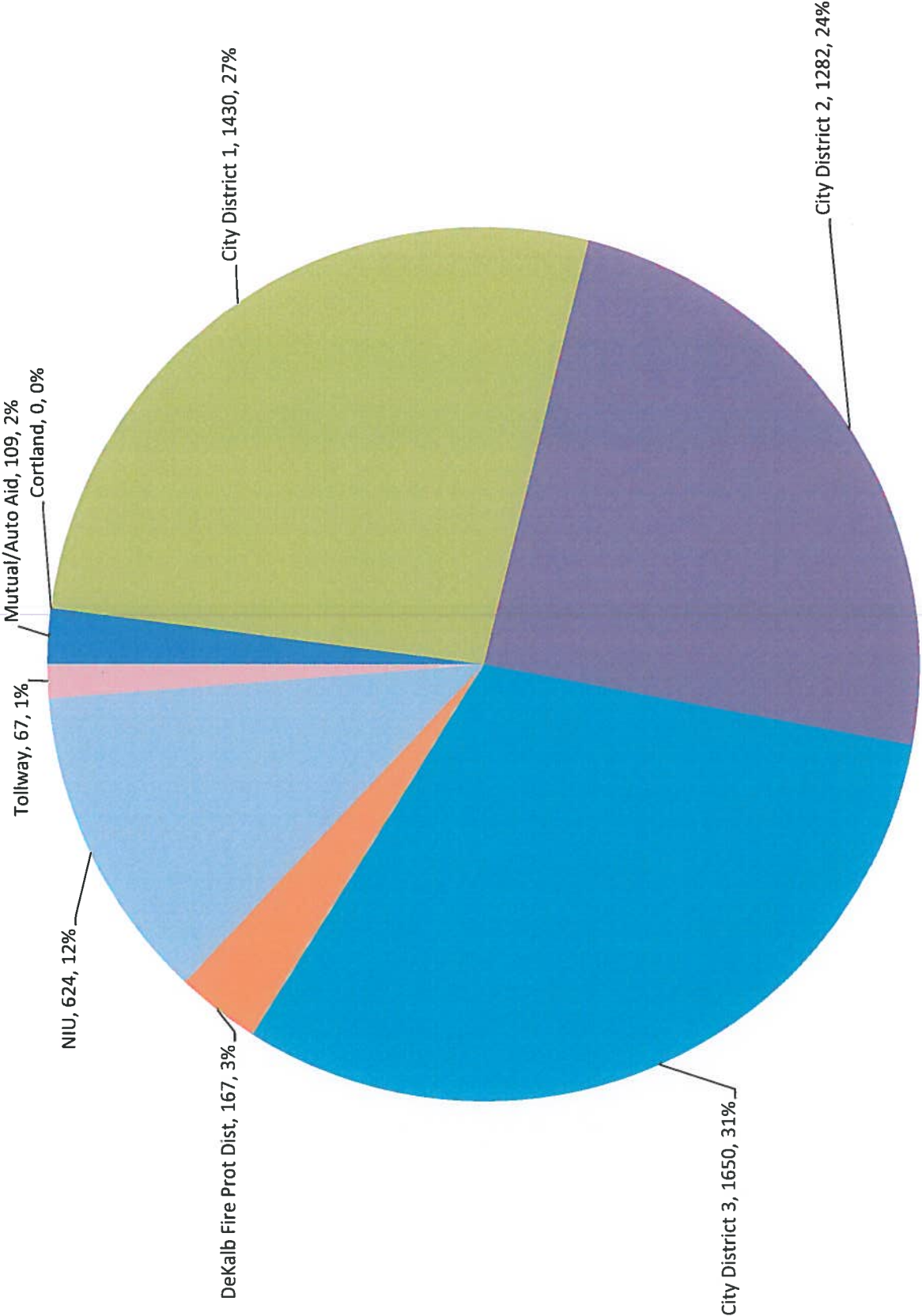
# Monthly Requests for Emergency Service



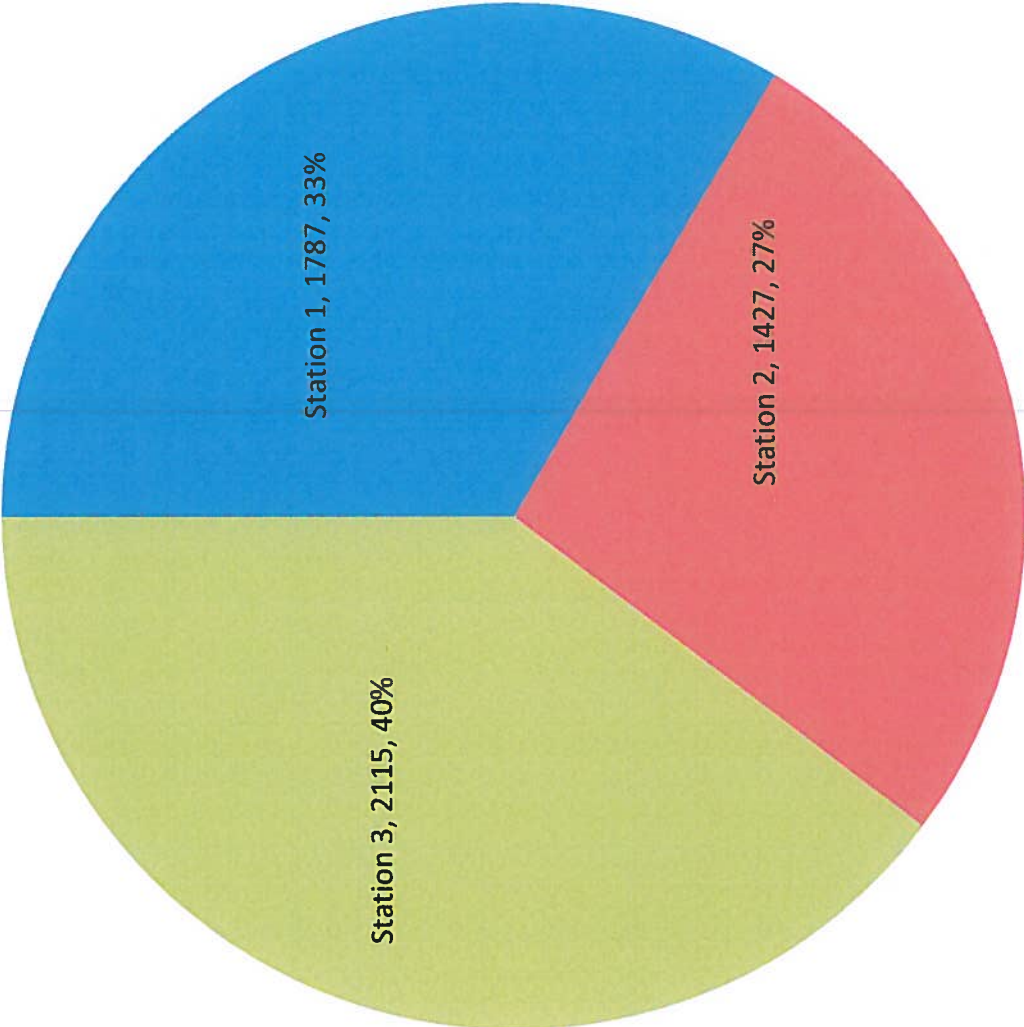


**Calls By Incident Type Category**

# Calls by Response Area

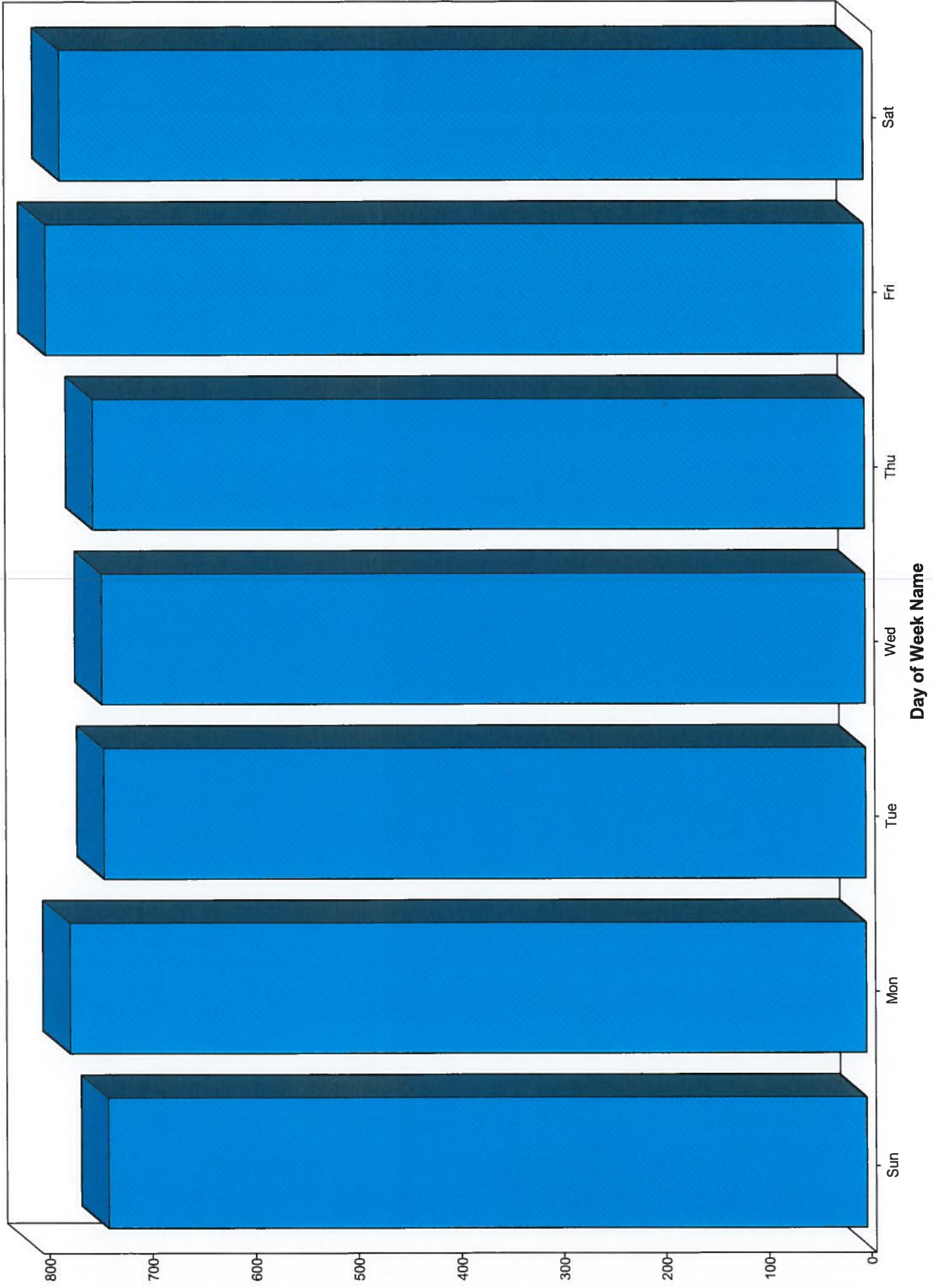


# Incident Response by Fire Station

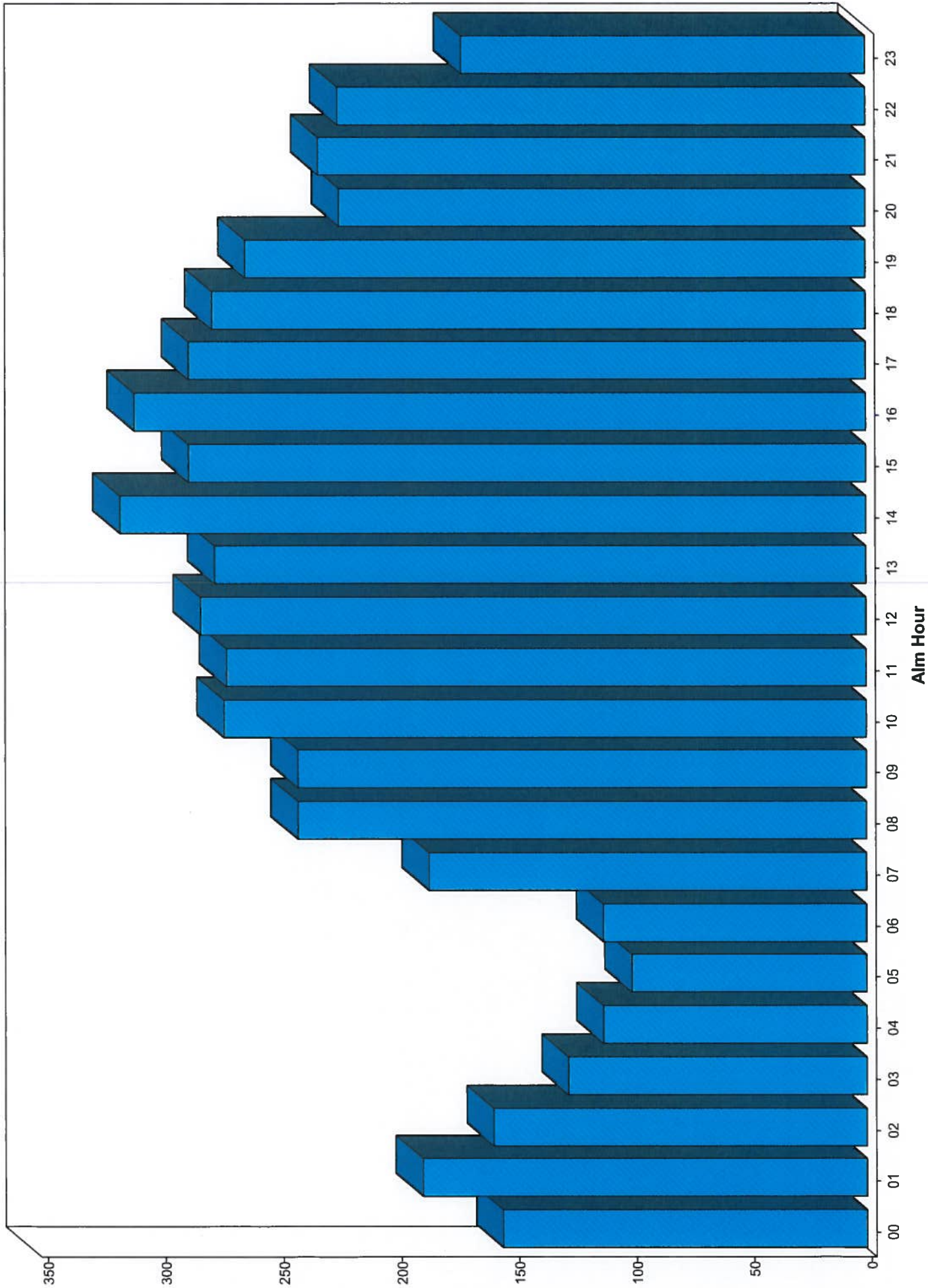




Incident Responses by Day of Week  
Alarm Date Between {07/01/2014} And {06/30/2015}



Count of Incidents by Alarm Hour  
Alarm Date Between {07/01/2014} And {06/30/2015}



# DeKalb Fire Department

## Departmental Activity Report

Current Period: 07/01/2014 to 06/30/2015, Prior Period: 07/01/2013 to 06/30/2014

00:00 to 23:59

All Stations

All Shifts

All Units

All Activity Types

Category	Current Period		Prior Period	
	Count	Staff Hrs	Count	Staff Hrs
<b>Departmental Events</b>				
4 Off Locked Day	75	89,472.00	120	2,760.00
Ceremony	1	1.00	0	0.00
Flag status change	0	0.00	10	10.00
MEETING	0	0.00	2	5.00
Other	1	2.00	3	27.00
	77	89,475.00	135	2,802.00
<b>Dispatch/Remote Station Incidents*</b>				
EMS Incidents	0	0.00	0	0.00
NFIRS Incidents	0	0.00	0	0.00
	0	0.00	0	0.00
<b>EMS Alarm Situations</b>				
No Location Provided	0	0.00	3	5.45
	0	0.00	3	5.45
<b>Fire Alarm Situations</b>				
Accident, potential accident	2	13.88	2	1.75
Animal problem or rescue	1	1.08	3	8.22
Attempted burning, illegal action	1	2.68	0	0.00
Biological hazard	1	2.04	0	0.00
Chemical release, reaction, or toxic	32	135.54	43	276.00
Citizen complaint	10	8.43	0	0.00
Combustible/flammable spills & leaks	37	136.17	51	173.14
Controlled burning	17	31.10	14	19.03
Cover assignment, standby at fire station,	16	359.96	18	220.64
Cultivated vegetation, crop fire	2	63.61	3	16.39
Dispatched and cancelled en route	34	131.98	53	64.38
Electrical wiring/equipment problem	84	254.93	77	299.01
Emergency medical service (EMS) Incident	3,891	8,356.56	3,762	8,368.40
Excessive heat, scorch burns with no	5	9.50	5	44.06
Explosive, bomb removal	1	2.40	0	0.00
Extrication, rescue	18	84.88	10	76.76
False alarm and false call, Other	3	3.76	30	127.26
Fire, Other	0	0.00	9	61.86

\* Staff hours for Fire Alarm responses that have an associated EMS alarm record are considered shared hours. Shared hours are posted only with the EMS alarm responses to avoid duplication of staff hours in totals.

# DeKalb Fire Department

## Departmental Activity Report

Current Period: 07/01/2014 to 06/30/2015, Prior Period: 07/01/2013 to 06/30/2014

00:00 to 23:59

All Stations

All Shifts

All Units

All Activity Types

Category	Current Period		Prior Period	
	Count	Staff Hrs	Count	Staff Hrs
<b>Fire Alarm Situations</b>				
Good intent call, Other	0	0.00	13	15.19
Hazardous condition, Other	3	33.30	5	14.07
HazMat release investigation w/no HazMat	12	93.39	26	72.02
Lock-In	1	1.20	0	0.00
Malicious, mischievous false alarm	20	125.04	27	96.95
Medical assist	4	3.38	5	3.88
Mobile property (vehicle) fire	20	199.77	17	49.00
Natural vegetation fire	10	25.20	11	24.12
Outside rubbish fire	40	72.31	50	93.37
Overpressure rupture from air or gas (no	1	0.28	1	21.32
Overpressure rupture, explosion, overheat,	0	0.00	1	0.96
Person in distress	4	3.36	8	7.37
Public service assistance	241	394.92	146	437.09
Rescue or EMS standby	71	936.42	89	1,333.41
Rescue, emergency medical call (EMS),	0	0.00	10	68.15
Service call, Other	1	4.75	8	11.30
Severe Weather & Natural Disaster - Other	0	0.00	1	1.52
Severe Weather & Natural Disaster -	5	288.09	3	16.74
Smoke, odor problem	52	231.06	51	252.94
Special outside fire	5	16.92	4	7.81
Special type of incident, other	9	161.26	7	116.76
Steam, Other gas mistaken for smoke	21	67.79	13	28.59
Structure Fire	80	1,157.04	60	1,484.46
System or detector malfunction	181	327.20	217	367.82
Unauthorized burning	37	42.48	39	135.53
Unintentional system/detector operation	302	451.57	301	479.79
Vicinity alarm	1	1.50	0	0.00
Water problem	13	26.57	29	188.39
Wrong location, no emergency found	39	66.67	39	45.29
	5,328	14,329.97	5,261	15,130.74
<b>Hydrant Activities</b>				
Flow Tests	0	0.00	0	0.00
Inspections	0	0.00	0	0.00
	0	0.00	0	0.00

\* Staff hours for Fire Alarm responses that have an associated EMS alarm record are considered shared hours. Shared hours are posted only with the EMS alarm responses to avoid duplication of staff hours in totals.

# DeKalb Fire Department

## Departmental Activity Report

Current Period: 07/01/2014 to 06/30/2015, Prior Period: 07/01/2013 to 06/30/2014

00:00 to 23:59

All Stations

All Shifts

All Units

All Activity Types

Category	Current Period		Prior Period	
	Count	Staff Hrs	Count	Staff Hrs
<b>Inspection Violations Corrected</b>				
Address numbers.	24		13	
Alarm testing.	0		1	
ANNUNCIATOR.	3		0	
AUDIBLE ALARM NOTIFICATION APPLIANCE.	2		0	
Ceiling clearance.	2		0	
Clearance from ignition sources.	12		30	
Exit sign illumination.	29		45	
Extension cords.	39		78	
Fire Department Connection	0		1	
Floor control valves.	0		2	
General requirements.	49		49	
General.	6		6	
Hangers and brackets.	4		0	
Headroom.	0		13	
Illumination emergency power.	0		2	
International Fire Code 1011.2 & 1011.1	4		18	
International Fire Code 605.31	4		4	
International Fire Code 605.4	24		15	
International Fire Code 605.5	32		30	
International Fire Code 605.6	2		24	
International Fire Code 805.1	8		5	
International Fire Code 904.5.1	16		25	
Labeling.	2		2	
MC 16.06	9		8	
MC 16.4	4		0	
MC 25	0		3	
Means of egress continuity.	19		30	
Motor Fuel Dispensing and Repairs	3		0	
Multiplug adapters.	18		29	
Municipal Code	4		1	
Municipal Code 14.03	12		12	
Municipal Code 14.03.5D	4		0	
Municipal Code 14.04F	0		1	
Municipal Code 14.05B	29		4	
Municipal Code 14.10	2		7	
Municipal Code 14.11	0		1	

\* Staff hours for Fire Alarm responses that have an associated EMS alarm record are considered shared hours. Shared hours are posted only with the EMS alarm responses to avoid duplication of staff hours in totals.

# DeKalb Fire Department

## Departmental Activity Report

Current Period: 07/01/2014 to 06/30/2015, Prior Period: 07/01/2013 to 06/30/2014

00:00 to 23:59

All Stations

All Shifts

All Units

All Activity Types

Category	Current Period		Prior Period	
	Count	Staff Hrs	Count	Staff Hrs
<b>Inspection Violations Corrected</b>				
Municipal Code 14.13	13		8	
Municipal Code 14.14	2		1	
Municipal Code 14.20 B	0		1	
Municipal Code 14.20b	16		28	
Municipal Code 14.2a	11		6	
Municipal Code 24.09	6		1	
Municipal Code 24.10b	47		25	
Municipal Code 24.11	31		15	
Municipal Code 25	0		1	
Municipal Code 26.02	15		31	
Municipal Code 28.03	61		67	
Municipal Code 29	17		17	
Municipal Code 43.03	2		4	
National Fire Protection Association	23		18	
National Fire Protection Association 7.9.3	122		129	
NFPA 80 2-8.5.2	20		19	
NFPA 96 11-4.12 & .13	36		22	
NFPA 96 11.2.1	19		48	
Obstructions.	15		24	
Office of State Fire Marshal	14		13	
Performance of system.	8		41	
PM 605.1	33		46	
Portable fire extinguishers for commercial	13		23	
Posting of occupant load.	14		80	
Property fee	0		2	
Property Maintenance 302.1	56		60	
Property Maintenance 304.13	27		30	
Property Maintenance 304.14	27		21	
Property Maintenance 304.15	11		16	
Property Maintenance 304.2	21		15	
Property Maintenance 304.3	6		10	
Property Maintenance 305.1	102		134	
Property Maintenance 402.2	0		5	
Property Maintenance 403.5	11		10	
Property Maintenance 504.1	44		98	
Property Maintenance 605.1	66		25	

\* Staff hours for Fire Alarm responses that have an associated EMS alarm record are considered shared hours. Shared hours are posted only with the EMS alarm responses to avoid duplication of staff hours in totals.

**DeKalb Fire Department**

**Departmental Activity Report**

Current Period: 07/01/2014 to 06/30/2015, Prior Period: 07/01/2013 to 06/30/2014

00:00 to 23:59

All Stations

All Shifts

All Units

All Activity Types

Category	Current Period		Prior Period	
	Count	Staff Hrs	Count	Staff Hrs
<b>Inspection Violations Corrected</b>				
Property Maintenance 703.2	32		15	
Property Maintenance 704.1 & IFC 907.20.5	9		2	
Required fire protection systems.	2		6	
Securing compressed gas containers,	17		55	
SMOKE DETECTOR.	1		1	
Smoke detectors.	0		2	
Specifications.	0		2	
Storage in buildings.	8		36	
Storage.	8		3	
Unapproved conditions.	23		70	
Unified Development Ordinance 12.03	0		4	
Unobstructed and unobscured.	0		25	
Where required.	10		11	
Working space and clearance.	22		42	
	<u>1,407</u>		<u>1,827</u>	

**Inspection Violations Discovered**

Address numbers.	27		17	
Alarm testing.	0		1	
ANNUNCIATOR.	3		0	
AUDIBLE ALARM NOTIFICATION APPLIANCE.	2		0	
Ceiling clearance.	3		0	
Clearance from ignition sources.	15		33	
Equipment maintenance and inspection.	0		1	
Exit sign illumination.	33		44	
Extension cords.	44		90	
Fire Department Connection	0		1	
Fire escape stairs.	2		0	
Fire extinguishers.	0		1	
Floor control valves.	0		2	
General requirements.	59		56	
General.	6		9	
Hangers and brackets.	4		0	
Headroom.	2		12	
Illumination emergency power.	0		2	
Illumination.	3		0	

\* Staff hours for Fire Alarm responses that have an associated EMS alarm record are considered shared hours. Shared hours are posted only with the EMS alarm responses to avoid duplication of staff hours in totals.

# DeKalb Fire Department

## Departmental Activity Report

Current Period: 07/01/2014 to 06/30/2015, Prior Period: 07/01/2013 to 06/30/2014

00:00 to 23:59

All Stations

All Shifts

All Units

All Activity Types

Category	Current Period		Prior Period	
	Count	Staff Hrs	Count	Staff Hrs
<b>Inspection Violations Discovered</b>				
International Fire Code 1011.2 & 1011.1	5		31	
International Fire Code 605.31	4		8	
International Fire Code 605.4	24		28	
International Fire Code 605.5	32		57	
International Fire Code 605.6	3		50	
International Fire Code 805.1	8		8	
International Fire Code 904.5.1	17		24	
Labeling.	3		5	
MC 16.05 B	3		0	
MC 16.05 F	4		0	
MC 16.06	14		14	
MC 16.4	4		0	
MC 25	0		2	
Means of egress continuity.	32		42	
Motor Fuel Dispensing and Repairs	2		2	
Multiplug adapters.	15		36	
Municipal Code	4		2	
Municipal Code 14.03	12		27	
Municipal Code 14.03.5D	5		0	
Municipal Code 14.04F	0		2	
Municipal Code 14.05B	31		8	
Municipal Code 14.10	2		10	
Municipal Code 14.11	0		2	
Municipal Code 14.13	14		16	
Municipal Code 14.14	2		2	
Municipal Code 14.20 B	0		2	
Municipal Code 14.20b	17		48	
Municipal Code 14.2a	11		10	
Municipal Code 24.09	6		4	
Municipal Code 24.10b	49		53	
Municipal Code 24.11	31		31	
Municipal Code 25	0		2	
Municipal Code 26.02	13		41	
Municipal Code 28.03	47		83	
Municipal Code 29	24		27	
Municipal Code 43.03	3		10	

\* Staff hours for Fire Alarm responses that have an associated EMS alarm record are considered shared hours. Shared hours are posted only with the EMS alarm responses to avoid duplication of staff hours in totals.



# DeKalb Fire Department

## Departmental Activity Report

Current Period: 07/01/2014 to 06/30/2015, Prior Period: 07/01/2013 to 06/30/2014

00:00 to 23:59

All Stations

All Shifts

All Units

All Activity Types

Category	Current Period		Prior Period	
	Count	Staff Hrs	Count	Staff Hrs
<b>Inspection Violations Discovered</b>				
Municipal Code 5.14	0		3	
Municipal codes Smoking Regulations	1		0	
National Fire Protection Association	28		28	
National Fire Protection Association 7.9.3	133		173	
NFPA 80 2-8.5.2	22		34	
NFPA 96 11-4.12 & .13	37		24	
NFPA 96 11.2.1	18		54	
Obstructions.	14		28	
Office of State Fire Marshal	15		22	
Performance of system.	7		40	
PM 605.1	42		63	
Portable fire extinguishers for commercial	14		23	
Posting of occupant load.	15		89	
Property fee	0		2	
Property Maintenance 302.1	80		106	
Property Maintenance 304.13	31		68	
Property Maintenance 304.14	27		43	
Property Maintenance 304.15	13		26	
Property Maintenance 304.2	35		35	
Property Maintenance 304.3	8		10	
Property Maintenance 305.1	116		201	
Property Maintenance 402.2	2		6	
Property Maintenance 403.5	11		20	
Property Maintenance 504.1	53		134	
Property Maintenance 605.1	70		45	
Property Maintenance 703.2	34		36	
Property Maintenance 704.1 & IFC 907.20.5	10		5	
Required fire protection systems.	2		10	
Securing compressed gas containers,	20		57	
SMOKE DETECTOR.	4		3	
Smoke detectors.	0		2	
Specifications.	0		2	
Storage in buildings.	10		36	
Storage.	12		5	
Unapproved conditions.	22		40	
Unified Development Ordinance 12.03	0		9	

\* Staff hours for Fire Alarm responses that have an associated EMS alarm record are considered shared hours. Shared hours are posted only with the EMS alarm responses to avoid duplication of staff hours in totals.

# DeKalb Fire Department

## Departmental Activity Report

Current Period: 07/01/2014 to 06/30/2015, Prior Period: 07/01/2013 to 06/30/2014

00:00 to 23:59

All Stations

All Shifts

All Units

All Activity Types

Category	Current Period		Prior Period	
	Count	Staff Hrs	Count	Staff Hrs
<b>Inspection Violations Discovered</b>				
Unobstructed and unobscured.	1		26	
Weeds	1		0	
Where required new buildings and	1		0	
Where required.	11		12	
Working space and clearance.	23		52	
	1,587		2,528	
<b>Non-Incident Activities</b>				
Acting Shift Commander Early Arrival	1	24.00	0	0.00
Administration	38	63.49	77	108.50
Ambulance Ride-Along	3	26.00	0	0.00
Bereavement	12	273.00	7	154.00
Buildings and Grounds	397	891.85	250	559.73
Communications Activities	71	38.67	9	15.28
Community Event	31	32.61	14	35.00
Comp Time Used	1	12.00	1	24.00
Convocation Center Events	48	339.00	90	555.33
Corn Fest	9	53.21	9	76.00
DHS Football	15	77.00	4	25.00
EMS/Ambulance	13	9.66	10	21.15
Equipment Preperation	213	472.39	87	282.64
Excused	59	933.58	52	819.25
EXTINGUISHER TRAINING	12	51.96	0	0.00
Fill-in	378	3,361.93	581	4,989.96
Fire Drill	54	81.84	23	34.50
Fire Investigation	43	100.57	46	117.61
Fire Investigation Administration	3	3.00	0	0.00
Fire On Standby	0	0.00	8	16.00
Health Insurance Enrollment	22	10.00	37	51.00
Illness - Family	100	1,923.78	64	1,167.42
Illness - Self	95	2,107.59	70	1,565.07
Inspection Activities	545	9,029.01	628	7,293.29
Kelly Day	1,024	24,528.00	1,002	24,024.00
maintenance	0	0.00	6	54.00
MEETING	123	154.75	88	122.75
NIU Football	27	172.50	29	182.16

\* Staff hours for Fire Alarm responses that have an associated EMS alarm record are considered shared hours. Shared hours are posted only with the EMS alarm responses to avoid duplication of staff hours in totals.

# DeKalb Fire Department

## Departmental Activity Report

Current Period: 07/01/2014 to 06/30/2015, Prior Period: 07/01/2013 to 06/30/2014

00:00 to 23:59

All Stations

All Shifts

All Units

All Activity Types

Category	Current Period		Prior Period	
	Count	Staff Hrs	Count	Staff Hrs
<b>Non-Incident Activities</b>				
Off Duty Injury	24	560.00	86	2,026.00
On Duty	5,824	138,182.1	5,633	134,072.1
Orientation	0	0.00	4	4.00
Other Special Events	0	0.00	12	68.00
PARADE	24	27.00	28	35.00
Physical	22	19.00	60	131.25
Post Fire Activities	1	2.00	0	0.00
Pub Ed Event	107	202.10	4	8.00
PUB ED VISIT - NOT AT A STATION	88	103.09	15	14.00
Public Education	16	29.75	127	179.33
Public Safety Announcement	3	3.00	0	0.00
Restricted Duty - Light Duty	11	240.00	64	1,504.00
Special Event Preperation	8	10.25	5	25.00
Technical Rescue Team Activity	3	3.00	0	0.00
TOUR OF STATION	29	21.75	8	7.50
Trade Kelly Off	34	816.00	17	408.00
Trade Kelly On	29	696.00	18	432.00
Trade Time Off	522	11,154.00	438	9,567.25
Trade Time On	561	11,856.05	447	9,578.75
Transfer to Fire Prevention	0	0.00	2	48.00
Transfer to Shift	3	72.00	14	336.00
Vacation	1,530	36,768.00	1,493	35,693.50
Vehicle Maintenance	228	7,924.83	186	361.30
Work Comp	100	2,314.58	108	2,558.92
	12,504	255,775.8	11,961	239,351.5

### Occupancy Inspections/Activities

Annual Pre-plan Walkthrough	1	0.06	0	0.00
Fire Drill	9	12.75	4	20.22
INSPECTION - Building	0	0.00	3	2.25
INSPECTION - Commercial Building	26	3.23	0	0.00
Inspection - Final Occupancy	18	14.55	8	10.75
INSPECTION - Fire Alarm	0	0.00	2	1.00
INSPECTION - Fire Protection	1	1.00	1	0.08
INSPECTION - Fire Suppression System Test	0	0.00	1	1.00
INSPECTION - License - Fire and Safety	239	412.99	280	490.37

\* Staff hours for Fire Alarm responses that have an associated EMS alarm record are considered shared hours. Shared hours are posted only with the EMS alarm responses to avoid duplication of staff hours in totals.

# DeKalb Fire Department

## Departmental Activity Report

Current Period: 07/01/2014 to 06/30/2015, Prior Period: 07/01/2013 to 06/30/2014

00:00 to 23:59

All Stations

All Shifts

All Units

All Activity Types

Category	Current Period		Prior Period	
	Count	Staff Hrs	Count	Staff Hrs
<b>Occupancy Inspections/Activities</b>				
INSPECTION - License - Gaming Device	2	0.28	1	0.06
INSPECTION - License - Gas Station	44	66.24	9	8.33
INSPECTION - License - Hotel/Motel	7	9.77	13	323.30
INSPECTION - License - Rooming House	133	1,058.75	122	451.82
Inspection - Property Maintenance	0	0.00	2	1.00
INSPECTION - School	7	9.00	5	8.50
INSPECTION - Special	9	9.25	0	0.00
PLAN REVIEW - Other	1	1.00	0	0.00
REFERRAL/COMPLAINT - Citizen FLS Checklist	9	62.22	0	0.00
REFERRAL/COMPLAINT - Fire FLS Checklist	8	7.33	3	1.75
REFERRAL/COMPLAINT - Fire RH Checklist	5	6.08	6	15.50
REFERRAL/COMPLAINT - Other	1	0.50	0	0.00
REFERRAL/COMPLAINT - Other FLS Checklist	4	3.22	1	0.50
Test - Alarm System	6	3.14	3	0.53
Test - Alarm System - performed by Vendor	2	1.25	1	0.50
Test - Ansul System	2	2.00	2	0.54
Test - Fire Suppression System	7	94.76	2	6.68
TEST - Sprinkler - performed by Vendor	1	1.00	0	0.00
	542	1,780.37	469	1,344.68
<b>Permits Issued</b>				
Burning Permit	1		1	
Fire Safety Registration	404		0	
Fireworks - Conduct Display	3		1	
	408		2	
<b>Testing/Maintenance of Equipment</b>				
Alternate/Generator Repair	0	0.00	2	2.00
Body Repair	0	0.00	3	2.00
Daily Check	45	0.00	6	0.00
Electrical Repair	1	8.50	10	63.50
General Maintenance	3	2.50	4	1.75
Heat/Coolant Repair	1	1.00	5	213.50
Light/Bulb Replacement	3	1.50	4	1.75
Oil Change	2	3.00	7	38.00

\* Staff hours for Fire Alarm responses that have an associated EMS alarm record are considered shared hours. Shared hours are posted only with the EMS alarm responses to avoid duplication of staff hours in totals.

# DeKalb Fire Department

## Departmental Activity Report

Current Period: 07/01/2014 to 06/30/2015, Prior Period: 07/01/2013 to 06/30/2014

00:00 to 23:59

All Stations

All Shifts

All Units

All Activity Types

Category	Current Period		Prior Period	
	Count	Staff Hrs	Count	Staff Hrs
<b>Testing/Maintenance of Equipment</b>				
On Call Chief	33	144.00	284	1,032.00
OSHA Hose Pressure Test	315	236.25	293	6,969.00
Pump repair	0	0.00	1	0.00
Pump Test	0	0.00	4	15.00
Safety Lane	0	0.00	4	0.50
Service and Clean	0	0.00	2	4.50
Serviced and Test Run	0	0.00	1	0.00
Test Battery	1	0.50	0	0.00
Tire Repair/Replacement	1	3.00	4	6.50
Tune Up	0	0.00	1	0.00
Weekly Check	0	0.00	1	0.50
	405	400.25	636	8,350.50
<b>Training</b>				
ADMINISTRATION	33	155.52	49	206.00
APPARATUS CHECKS	4,321	4,532.99	3,686	5,218.37
Building Tour/Familiarization	178	228.80	209	305.75
BUILDING/INSPECTION FIRE PREVENTION	10	6.75	49	73.40
Emergency Medical Services	989	2,036.65	830	1,839.92
Fire Inspector 1	10	78.00	1	80.00
Fire Investigation	12	83.50	32	146.00
FIRE PREVENTION PRINCIPLES	1	40.00	0	0.00
Fire Rescue International Show	0	0.00	11	17.00
FIRE TRAINING	1,286	3,006.53	1,301	2,727.90
FIREFIGHTER 2	0	0.00	7	5.50
FIREFIGHTER 3	1	40.00	0	0.00
FIREGROUND COMPANY OFFICER	0	0.00	1	40.00
HAZARDOUS MATERIALS	308	818.00	478	1,227.04
HAZARDOUS MATERIALS INCIDENT COMMAND	0	0.00	2	16.00
ICS 200	0	0.00	1	2.00
Incident Safety Officer	0	0.00	1	8.00
INTRO TO ICS	0	0.00	1	2.00
LADDER AND PUMP OPERATIONS	25	26.10	27	39.00
MABAS Conference	3	12.75	3	16.25
MANAGEMENT 2	1	40.00	0	0.00
MAP TRAINING	22	22.80	118	123.50

\* Staff hours for Fire Alarm responses that have an associated EMS alarm record are considered shared hours. Shared hours are posted only with the EMS alarm responses to avoid duplication of staff hours in totals.

# DeKalb Fire Department

## Departmental Activity Report

Current Period: 07/01/2014 to 06/30/2015, Prior Period: 07/01/2013 to 06/30/2014

00:00 to 23:59

All Stations

All Shifts

All Units

All Activity Types

Category	Current Period		Prior Period	
	Count	Staff Hrs	Count	Staff Hrs
<b>Training</b>				
NON-EMERGENCY DRIVING	1,976	2,165.92	1,589	2,152.93
ORGANIZATION	84	217.75	261	572.65
PERSONAL PROTECTIVE EQUIPMENT INSPECTION	213	117.55	183	101.96
PHYSICAL FITNESS TRAINING	1,875	2,709.19	1,493	2,705.57
PRE-PLANNING	45	55.00	118	138.20
PUBLIC EDUCATION	25	27.50	13	12.25
PUMP OPERATIONS ON ENGINES	46	51.75	34	41.25
QUICK DRILL	19	23.50	32	23.50
SCBA INSPECTION	4,149	1,831.56	3,874	2,243.31
Shift 2 Captain Training	8	11.00	0	0.00
TECHNICAL RESCUE	105	261.75	215	572.25
TECHNICAL RESCUE AWARENESS	13	6.50	0	0.00
TRT EXERCISE	0	0.00	1	6.00
	15,758	18,607.36	14,620	20,663.50

\* Staff hours for Fire Alarm responses that have an associated EMS alarm record are considered shared hours. Shared hours are posted only with the EMS alarm responses to avoid duplication of staff hours in totals.