

## DeKalb Fire Department



## FY2016 Report

**DeKalb Fire Department**

700 Pine Street  
DeKalb, Illinois 60115

815.748.8460 phone  
815.748.8497 fax

[www.cityofdekalb.com/DFD.htm](http://www.cityofdekalb.com/DFD.htm)  
[www.facebook.com/dekalbfire](http://www.facebook.com/dekalbfire)

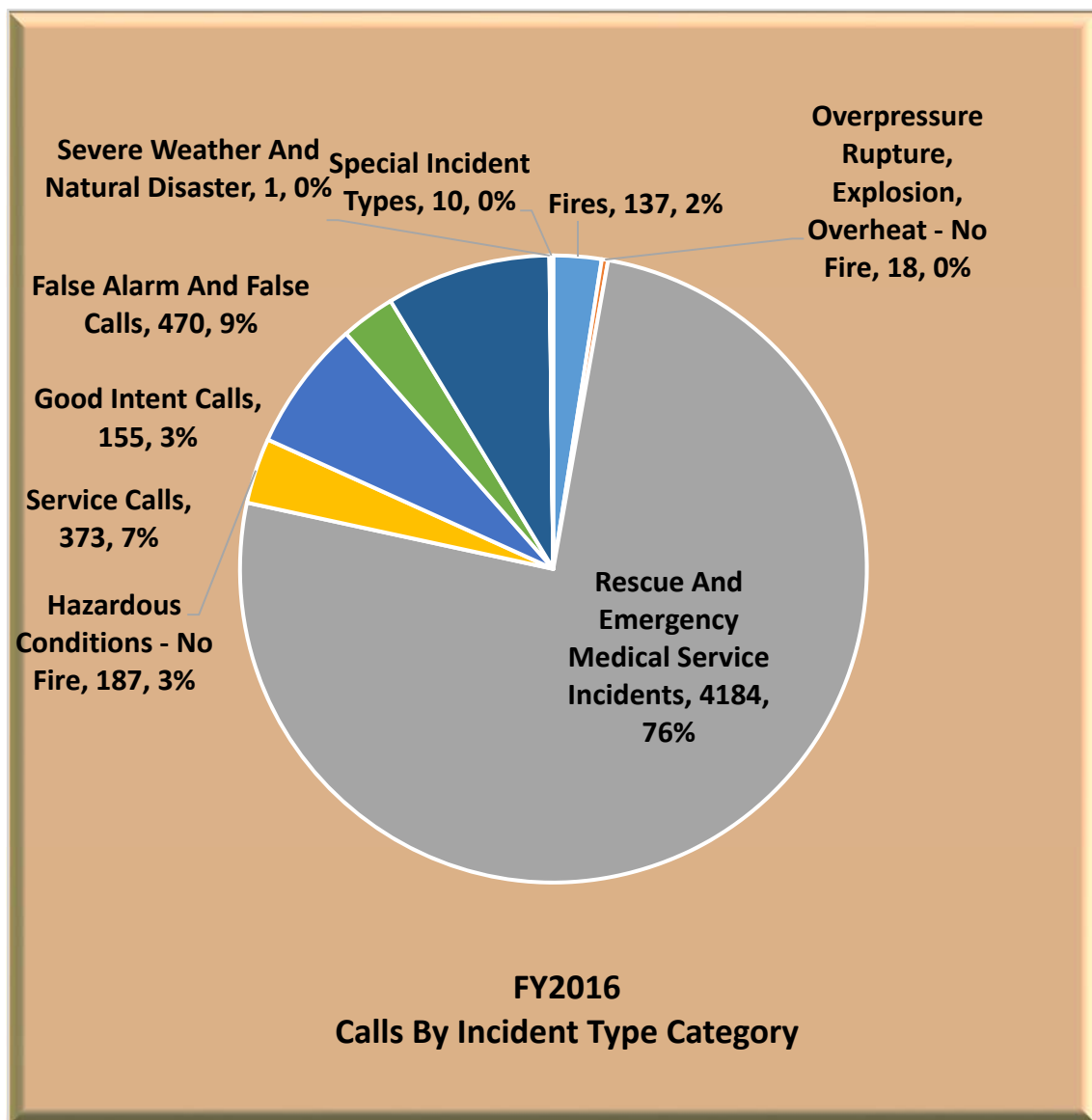
### Training

DeKalb firefighters spent 19,150 hours training during Fiscal Year 2016. Firefighters receive monthly fire training and bi-monthly hazardous materials and technical rescue training. Emergency Medical Technicians receive monthly EMS training.

### Operations

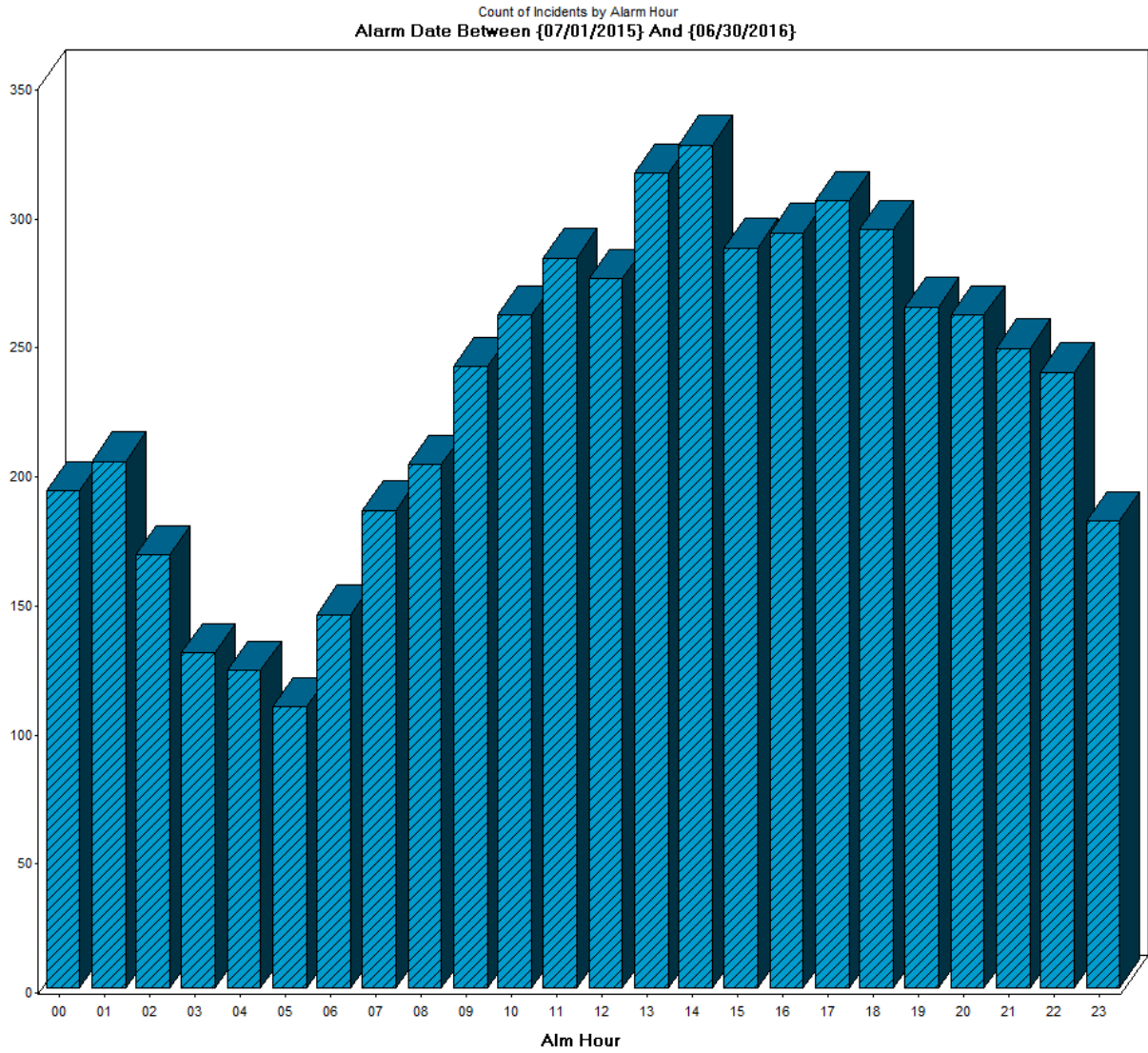
The DeKalb Fire Department responded to 5,535 incidents in FY 2016. Emergency medical requests accounted for 4,184 (75.59%) of the monthly total. The remaining 1,351 (24.41 %) of the incidents were fire/rescue related requests.

Mutual aid was provided to other communities on 137 incidents and was requested by DeKalb for 44 total incidents.



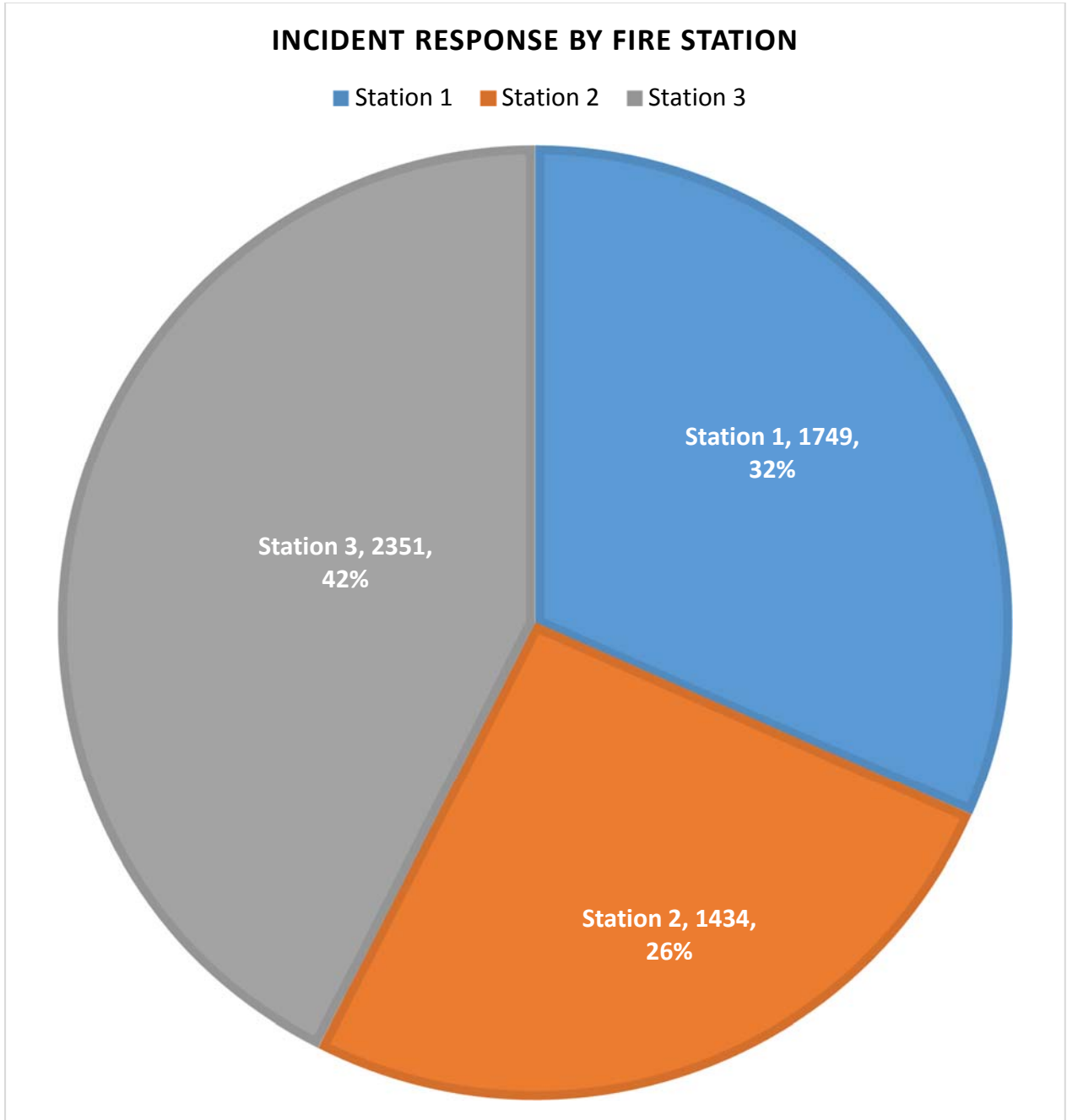
### Calls by Hour of the Day

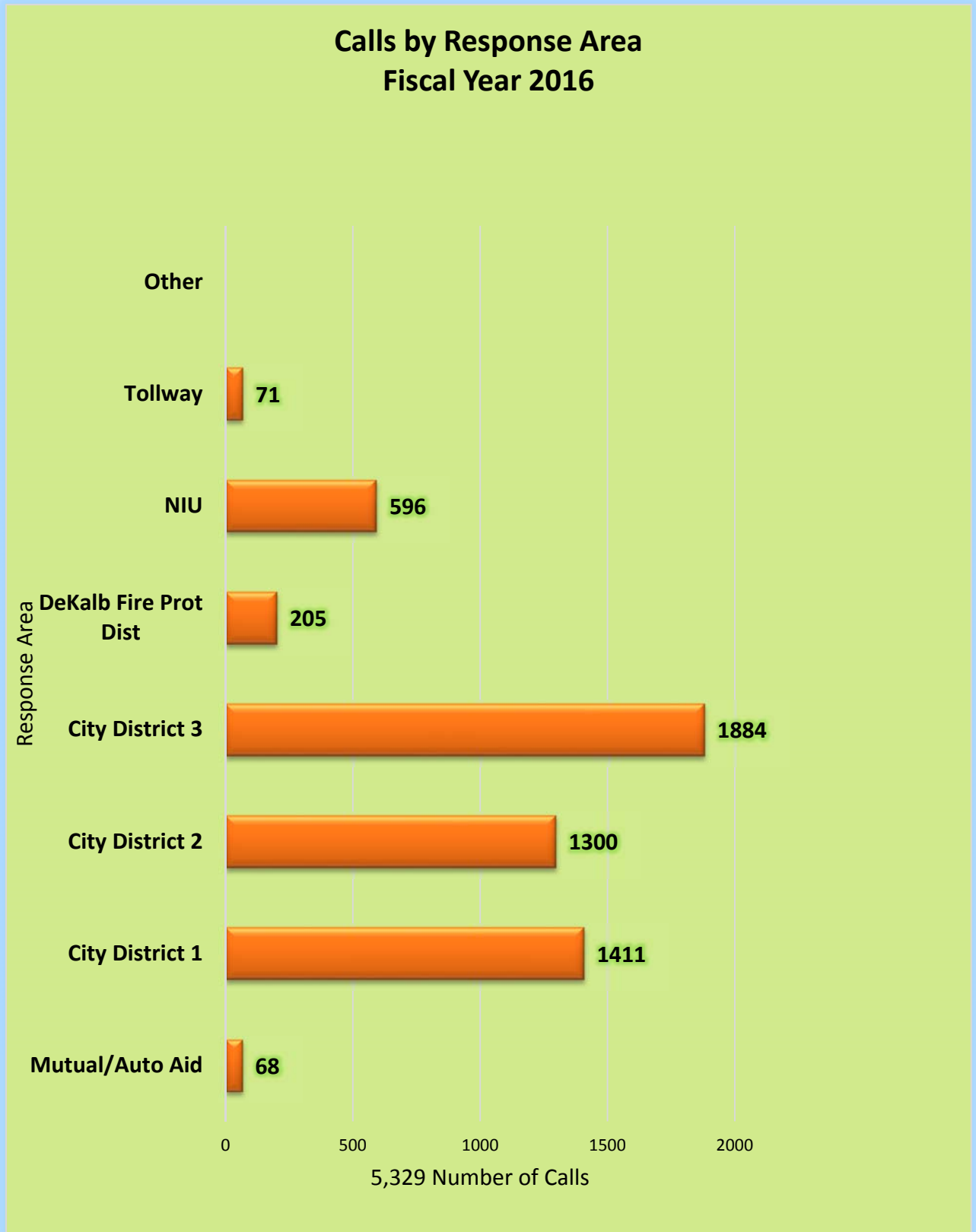
FY 2016



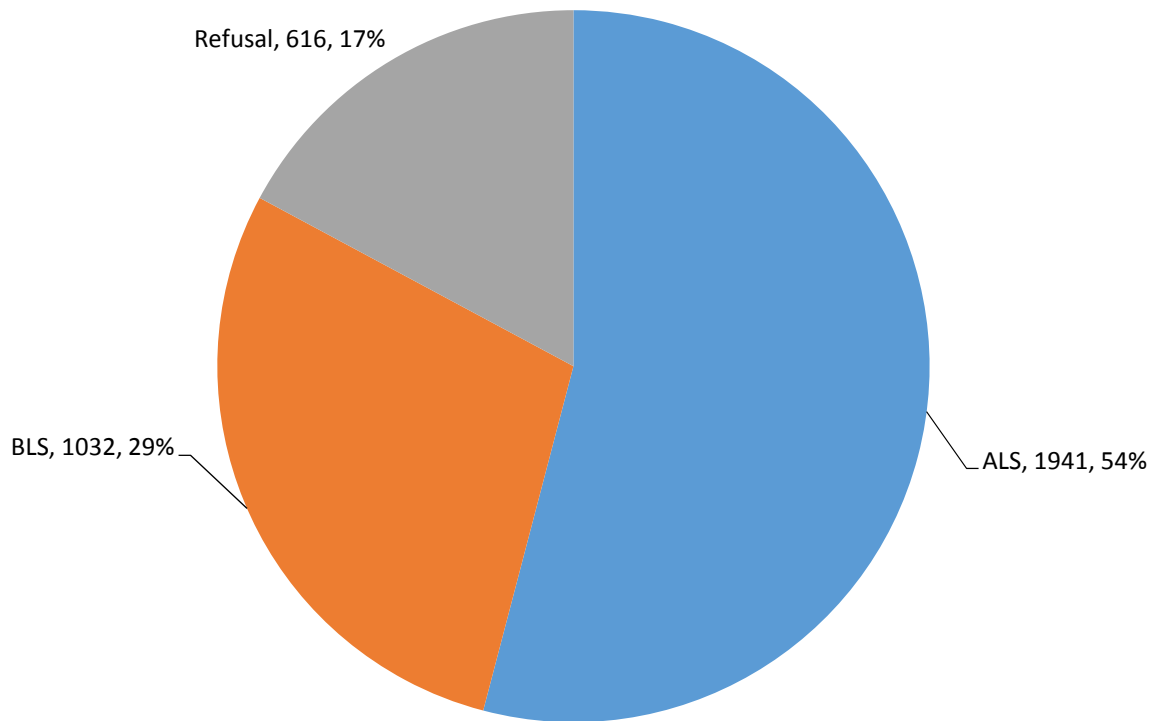
### Calls By Station

FY 2016

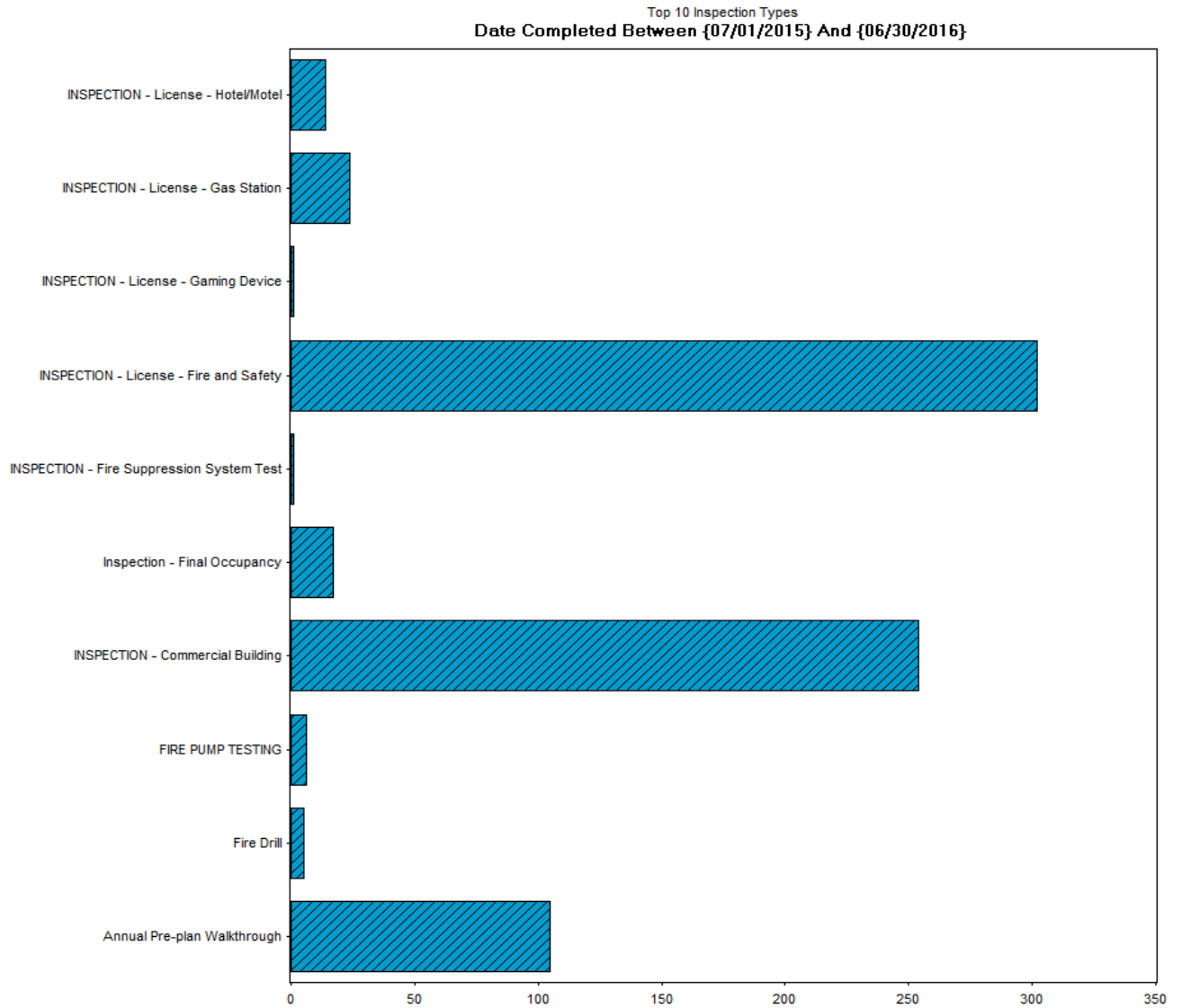




### Emergency Medical Activity Fiscal Year 2016



### Fire Prevention Inspections by Inspection Type FY 2016



**Overtime Comparison****FY 2016**

	<u>Hours</u>	<u>Average OT Rate</u>	<u>Average Dollars</u>
Acting Pay	3,581.00	\$ 3.211	\$ 11,498.23
Admin	160.50	\$ 47.727	\$ 7,660.18
AM Person Needs	12.00	\$ 47.727	\$ 572.72
Early Arrival	164.00	\$ 47.727	\$ 7,827.23
EMS	107.00	\$ 47.727	\$ 5,106.79
Fill In	3,033.25	\$ 47.727	\$ 144,767.92
Fire	191.50	\$ 47.727	\$ 9,139.72
Fire Investigation	21.75	\$ 47.727	\$ 1,038.06
Fire Prevention	2.00	\$ 47.727	\$ 95.45
Haz Mat	115.00	\$ 47.727	\$ 5,488.61
Holdover	334.75	\$ 47.727	\$ 15,976.61
Pub Ed	127.25	\$ 32.000	\$ 4,072.00
Radio	-	\$ 32.000	\$ -
Recalls	1,421.75	\$ 47.727	\$ 67,855.86
Safety	-	\$ 47.727	\$ -
SCBA	12.25	\$ 32.000	\$ 392.00
Special Event	1,399.25	\$ 39.000	\$ 54,570.75
TRT	48.50	\$ 47.727	\$ 2,314.76
Vehicles	<u>183.00</u>	\$ 40.000	<u>\$ 7,320.00</u>
Totals	10,914.75		\$ 345,696.91

**FY 2015**

	<u>Hours</u>	<u>Using FY16 OT Rate for Direct Comparison of Dollars</u>	<u>Average Dollars</u>
Acting Pay	4,132.75	\$ 3.211	\$ 13,269.85
Admin	110.00	\$ 47.727	\$ 5,249.97
AM Personnel	-	\$ 47.727	\$ -
Early Arrival	170.50	\$ 56.537	\$ 9,639.61
EMS	129.75	\$ 47.727	\$ 6,192.58
Fill In	2,921.00	\$ 47.727	\$ 139,410.57
Fire	244.75	\$ 47.727	\$ 11,681.18
Fire Investigation	16.75	\$ 47.727	\$ 799.43
Fire Prevention	30.25	\$ 47.727	\$ 1,443.74
Haz Mat	137.25	\$ 47.727	\$ 6,550.53
Holdover	190.00	\$ 47.727	\$ 9,068.13
Pub Ed	134.50	\$ 32.000	\$ 4,304.00
Radio	1.50	\$ 32.000	\$ 48.00
Recalls	1,477.00	\$ 47.727	\$ 70,492.78
Safety	2.00	\$ 47.727	\$ 95.45
SCBA	-	\$ 32.000	\$ -
Special Event	1,208.75	\$ 39.000	\$ 47,141.25
TRT	54.25	\$ 47.727	\$ 2,589.19
Vehicles	<u>101.00</u>	\$ 40.000	<u>\$ 4,040.00</u>
Totals	11,062.00		\$ 332,016.26





**Time Off Comparison****FY 2016**

	<u>Hours</u>	<u>Average Hourly Rate</u>	<u>Average Dollars</u>
Admin Leave	0	31.818	\$ -
Bereavement	156	31.818	\$ 4,963.61
Comp Used	60	31.818	\$ 1,909.08
Excused	1,165.50	31.818	\$ 37,083.88
Illness - Family	765.50	31.818	\$ 24,356.68
Illness - Self	2,646.25	31.818	\$ 84,198.38
Illness - Long Term	-	31.818	\$ -
Kelly Day	12,168.00	31.818	\$ 387,161.42
Suspension	-	31.818	\$ -
Light Duty	37.50	31.818	\$ 1,193.18
Off Duty Injury	1,064.75	31.818	\$ 33,878.22
Unpaid Leave	-	31.818	\$ -
Vacation	19,296.00	31.818	\$ 613,960.13
Work Comp	<u>1,978.50</u>	31.818	<u>\$ 62,951.91</u>
Totals	39,338.00		\$ 1,251,656.48

**FY 2015**

	<u>Hours</u>	<u>Using FY16 Hourly Rate for Direct Comparison of Dollars</u>	<u>Average Dollars</u>
Admin Leave	0	31.818	0
Bereavement	297	31.818	\$ 9,449.95
Comp Used	12	31.818	\$ 381.82
Excused	849.75	31.818	\$ 27,037.35
Illness - Family	1,873.75	31.818	\$ 59,618.98
Illness - Self	2,175.00	31.818	\$ 69,204.15
Kelly Day	11,400.00	31.818	\$ 362,725.20
Light Duty	240.00	31.818	\$ 7,636.32
Off Duty Injury	633.26	31.818	\$ 20,149.00
Unpaid Leave	-	31.818	\$ -
Vacation	18,048.00	31.818	\$ 574,251.26
Work Comp	<u>2,329.75</u>	31.818	<u>\$ 74,127.99</u>
Totals	37,858.51		\$ 1,204,582.01

