

DeKalb Fire Department



July 2017 Report

DeKalb Fire Department

700 Pine Street
DeKalb, Illinois 60115

815.748.8460 phone
815.748.8497 fax

www.cityofdekalb.com/DFD.htm
www.facebook.com/dekalbfire

Training

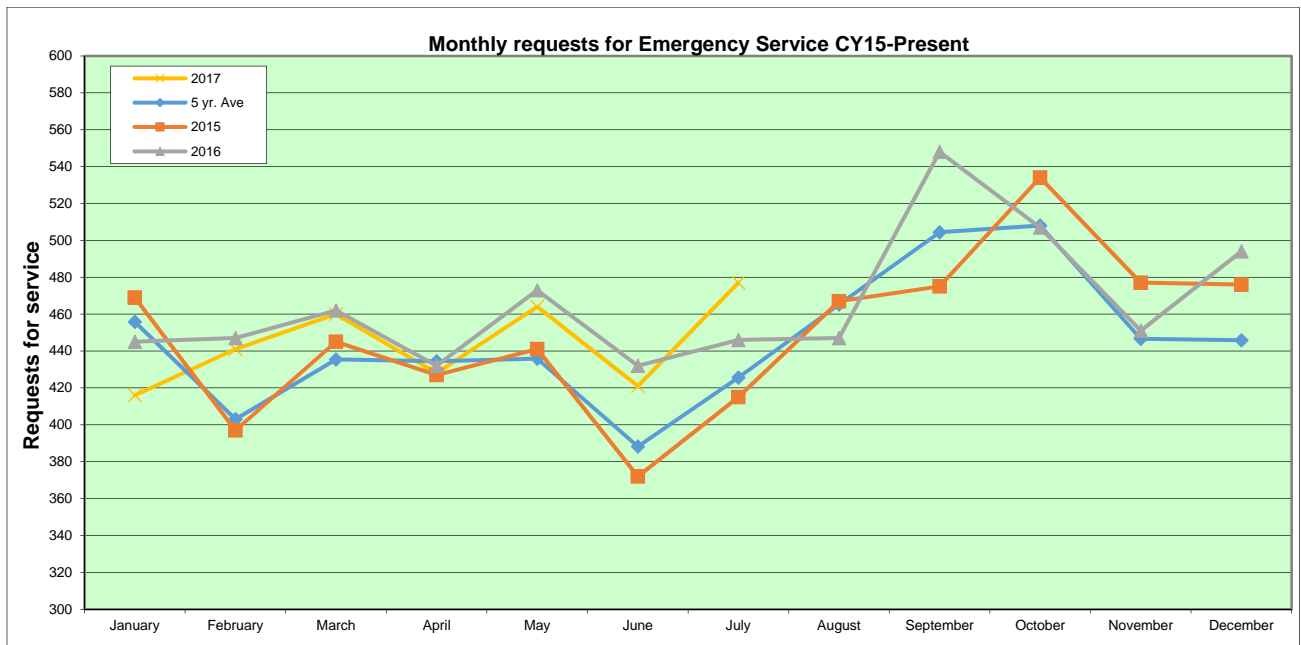
DeKalb firefighters spent 1779.27 hours training during July 2017. Firefighters receive monthly fire training and bi-monthly hazardous materials and technical rescue training. Emergency Medical Technicians receive monthly EMS training.

Operations

The DeKalb Fire Department responded to 477 incidents in July 2017. Emergency medical requests accounted for 325 (68.13%) of the monthly total. The remaining 152 (31.87%) of the incidents were fire/rescue related requests.

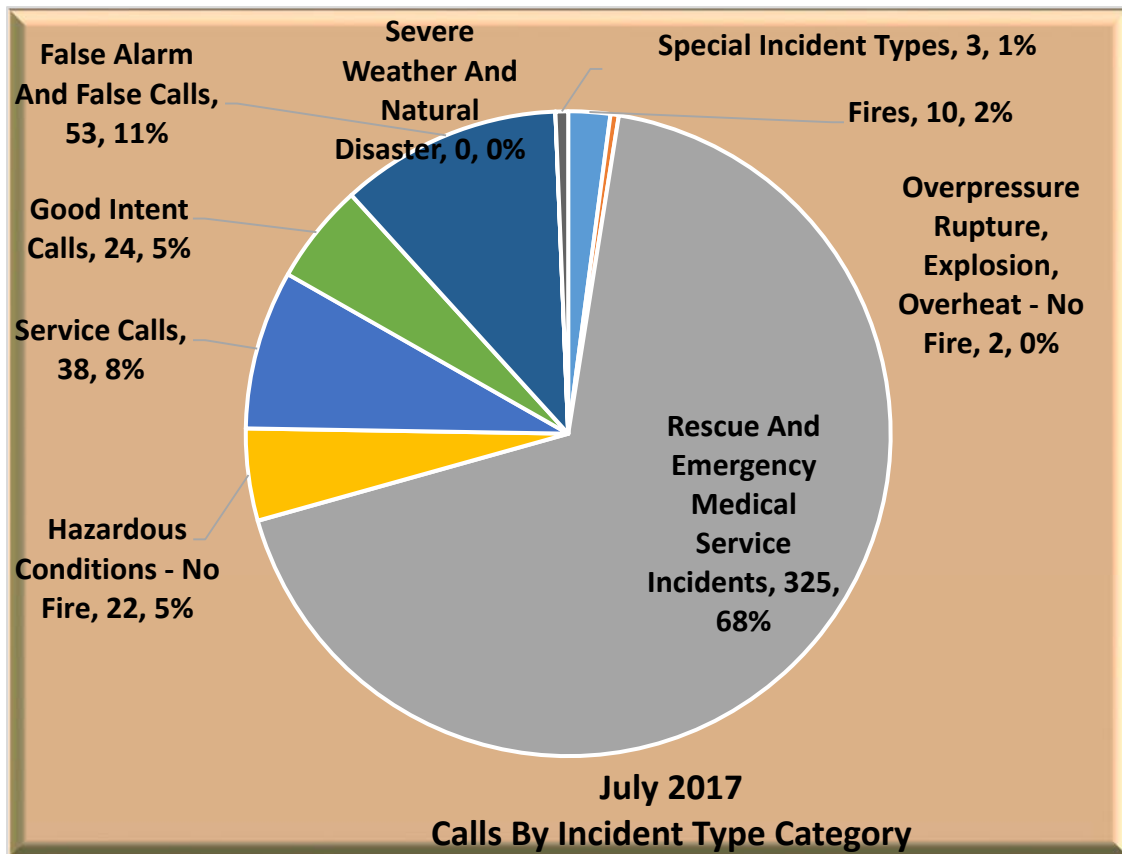
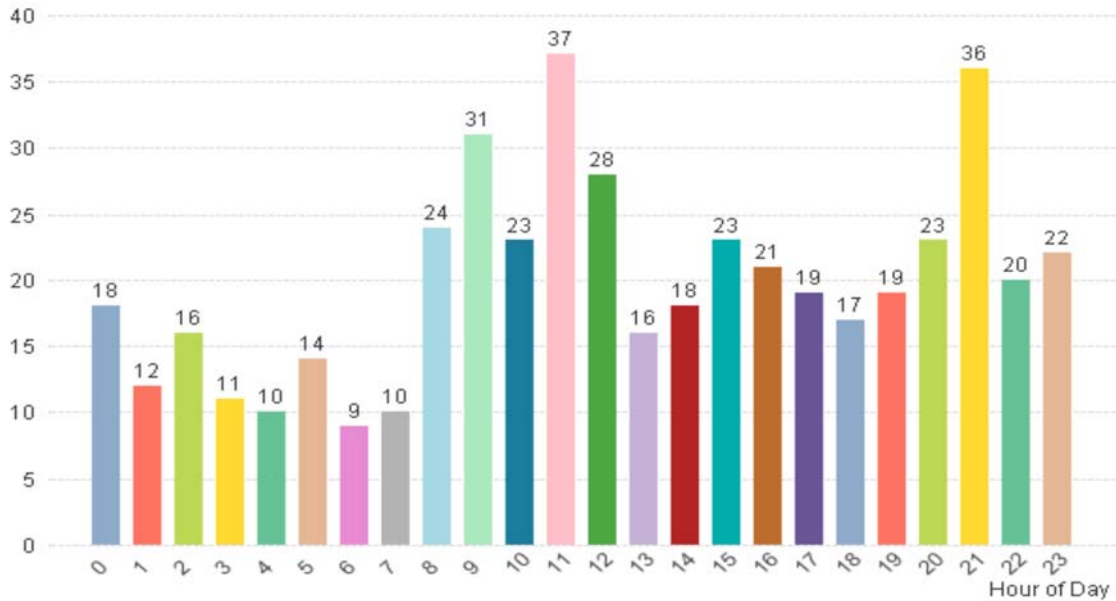
Mutual aid was provided to other communities on 14 incident and was requested by DeKalb for 1 total incident.

	<u>Jan</u>	<u>Feb</u>	<u>Mar</u>	<u>Apr</u>	<u>May</u>	<u>June</u>	<u>July</u>	<u>Aug</u>	<u>Sept</u>	<u>Oct</u>	<u>Nov</u>	<u>Dec</u>	<u>total</u>
2010	444	397	375	408	354	358	384	450	470	593	383	412	4964
2011	390	438	386	416	394	344	431	446	480	580	441	360	5096
2012	429	387	451	414	403	398	447	453	507	493	401	441	5205
2013	430	399	406	482	413	364	416	454	476	514	442	417	5209
2014	506	385	413	417	449	375	404	505	516	492	462	401	5325
2015	469	397	445	427	441	372	415	467	475	534	477	476	5392
2016	445	447	462	432	473	432	446	447	548	507	451	494	5584
2017	416	441	460	428	464	421	477						
5 yr. Ave	455	403	435	434	435	388	425	465	504	508	446	445	5343
2016	445	892	1354	1786	2259	2691	3137	3584	4132	4639	5090	5584	
2017	416	857	1317	1745	2209	2630	3107						
diff	-29	-35	-37	-41	-50	-61	-30						



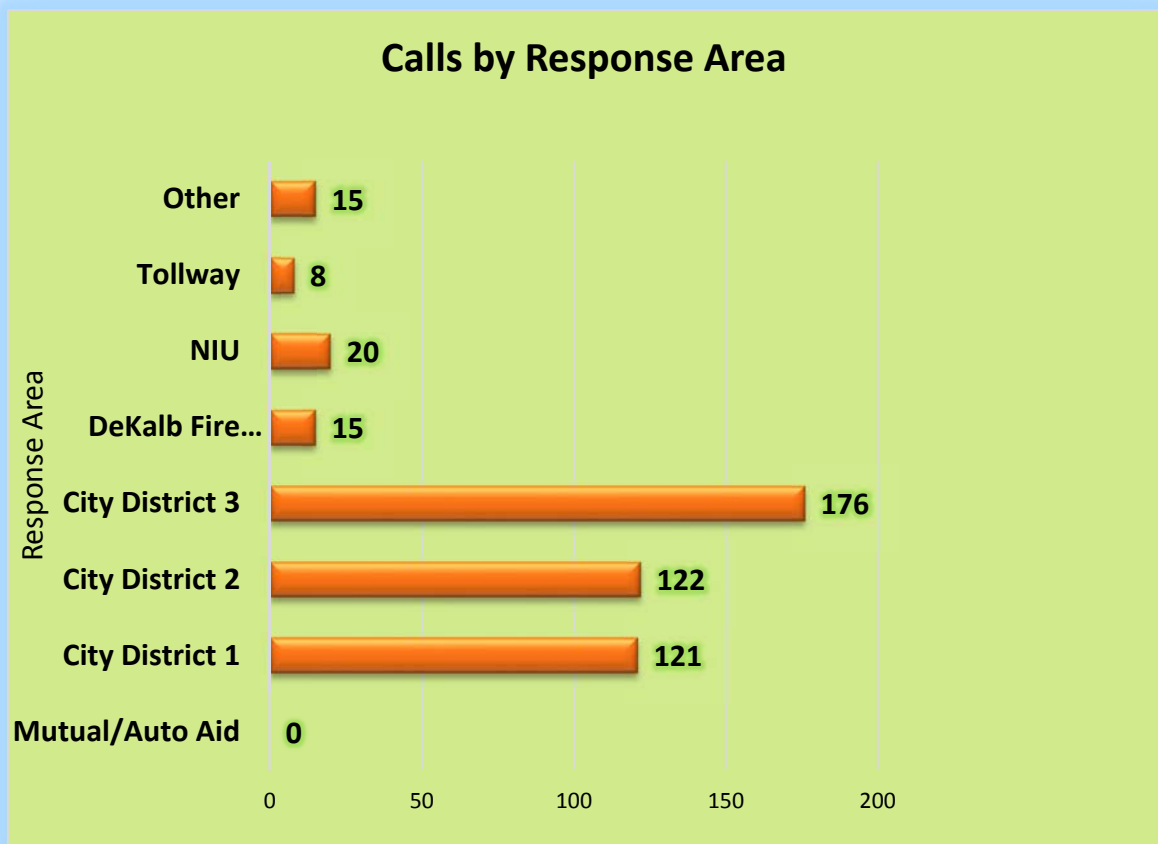
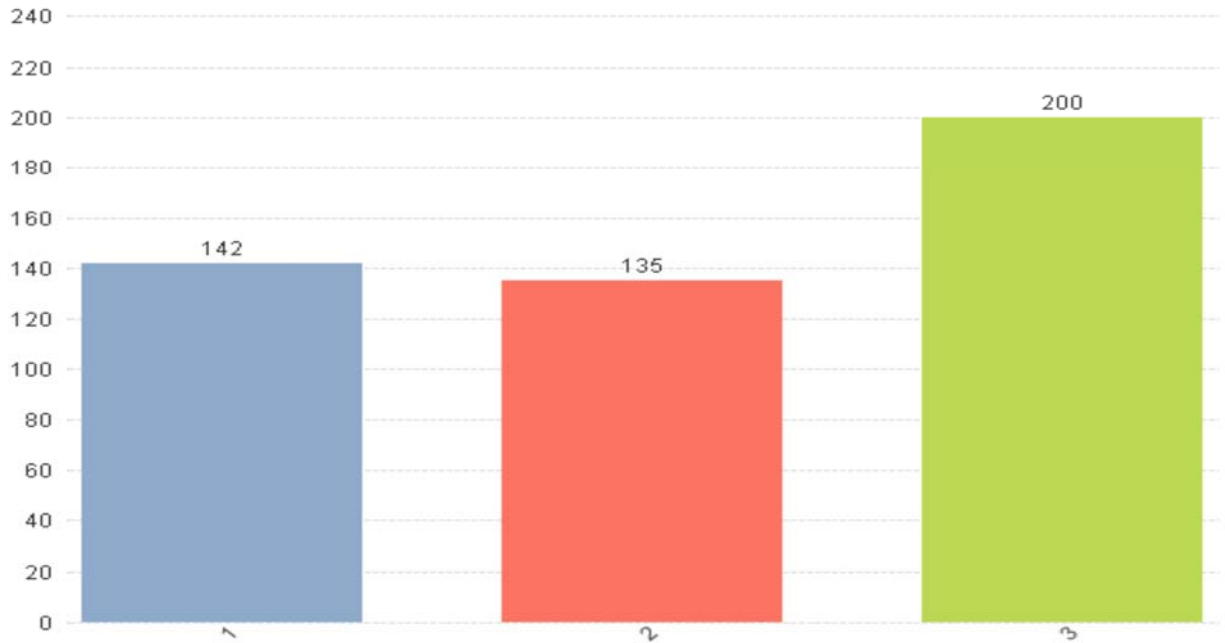
Calls by Hour of the Day

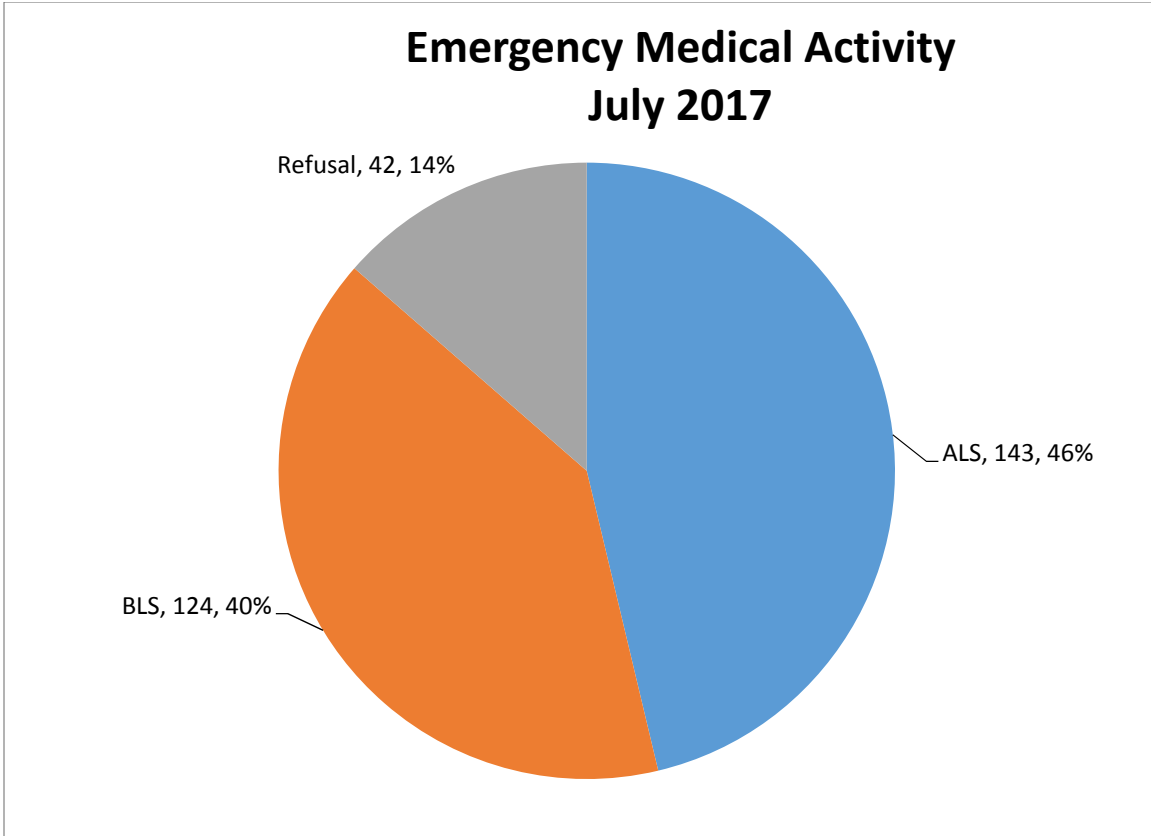
477 Total Incidents



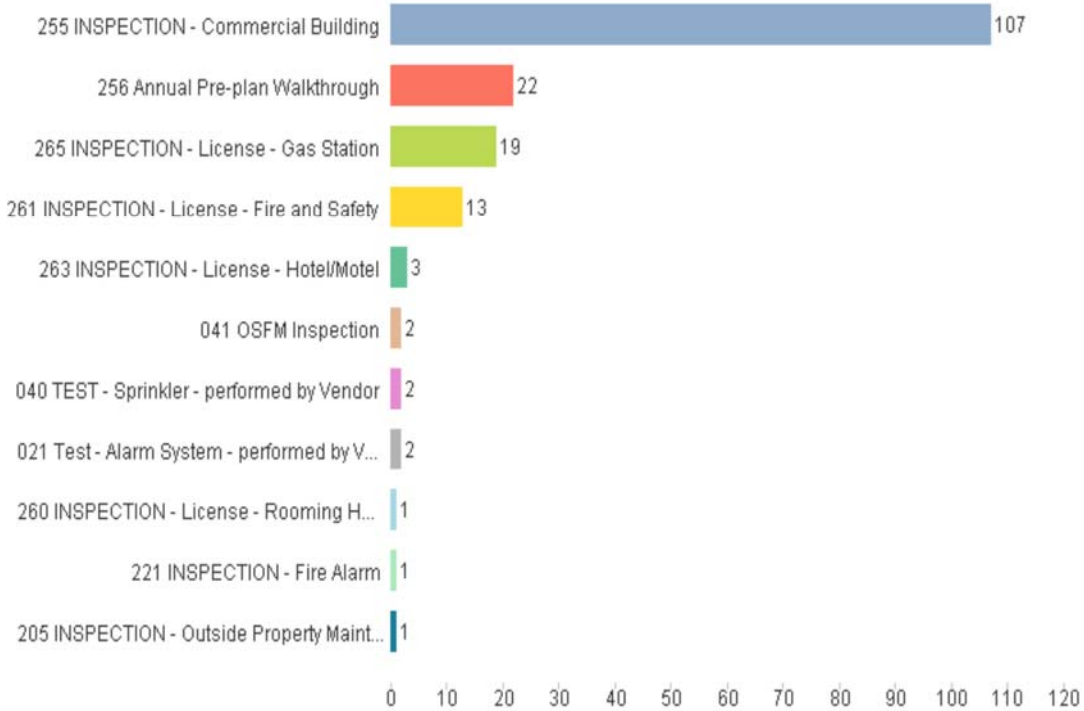
Calls By Station

477 Total Incidents





Fire Prevention Inspections by Inspection Type



Overtime Comparison**July 2017**

	<u>Hours</u>	<u>Average OT Rate</u>	<u>Average Dollars</u>
Acting Pay	507.50	\$ 3.332	\$ 1,691.14
Admin	2.00	\$ 49.532	\$ 99.06
AM Person Needs	-	\$ 49.532	\$ -
Early Arrival	12.50	\$ 58.675	\$ 733.44
EMS	4.00	\$ 49.532	\$ 198.13
Fill In	256.75	\$ 49.532	\$ 12,717.27
Fire	-	\$ 49.532	\$ -
Fire Investigation	-	\$ 49.532	\$ -
Fire Inspections	64.75	\$ 30.000	\$ 1,942.50
Haz Mat	-	\$ 49.532	\$ -
Holdover	17.25	\$ 49.532	\$ 854.42
Pub Ed	58.25	\$ 32.000	\$ 1,864.00
Radio	-	\$ 32.000	\$ -
Recalls	53.25	\$ 49.532	\$ 2,637.56
Safety	-	\$ 49.532	\$ -
SCBA	-	\$ 32.000	\$ -
Special Event	19.50	\$ 41.000	\$ 799.50
TRT	2.75	\$ 49.532	\$ 136.21
Vehicles	<u>14.25</u>	\$ 40.000	<u>\$ 570.00</u>
Totals	1,012.75		\$ 24,243.24

July 2016

	<u>Hours</u>	<u>Using FY17 OT Rate for Direct Comparison of Dollars</u>	<u>Average Dollars</u>
Acting Pay	698.50	\$ 3.332	\$ 2,327.61
Admin	2.00	\$ 49.532	\$ 99.06
AM Personnel	-	\$ 49.532	\$ -
Early Arrival	12.00	\$ 58.675	\$ 704.10
EMS	4.50	\$ 49.532	\$ 222.89
Fill In	133.00	\$ 49.532	\$ 6,587.72
Fire	-	\$ 49.532	\$ -
Fire Investigation	-	\$ 49.532	\$ -
Fire Prevention	-	\$ 30.000	\$ -
Haz Mat	10.50	\$ 49.532	\$ 520.08
Holdover	15.00	\$ 49.532	\$ 742.98
Pub Ed	26.75	\$ 32.000	\$ 856.00
Radio	5.00	\$ 32.000	\$ 160.00
Recalls	96.00	\$ 49.532	\$ 4,755.04
Safety	-	\$ 49.532	\$ -
SCBA	-	\$ 32.000	\$ -
Special Event	33.25	\$ 41.000	\$ 1,363.25
TRT	4.50	\$ 49.532	\$ 222.89
Vehicles	<u>33.75</u>	\$ 40.000	<u>\$ 1,350.00</u>
Totals	1,074.75		\$ 19,911.63



Time Off Comparison

July 2017	<u>Hours</u>	<u>Average Hourly Rate</u>	<u>Average Dollars</u>
Admin Leave	-	32.6134	\$ -
Bereavement	24.00	32.6134	\$ 782.72
Comp Used	-	32.6134	\$ -
Excused	4.50	32.6134	\$ 146.76
Illness - Family	38.00	32.6134	\$ 1,239.31
Illness - Self	120.50	32.6134	\$ 3,929.91
FMLA	168.00	32.6134	\$ 5,479.05
Kelly Day	1,008.00	32.6134	\$ 32,874.31
Suspension	-	32.6134	\$ -
Light Duty	-	32.6134	\$ -
Off Duty Injury	48.00	32.6134	\$ 1,565.44
Unpaid Leave	-	32.6134	\$ -
Vacation	1,968.00	32.6134	\$ 64,183.17
Work Comp	-	32.6134	\$ -
Totals	3,379.00		\$ 110,200.68

**Using FY16.5
Hourly Rate
for Direct
Comparison**

July 2016	<u>Hours</u>	<u>Hourly Rate of Dollars</u>	<u>Average Dollars</u>
Admin Leave	-	32.6134	\$ -
Bereavement	21.25	32.6134	\$ 693.03
Comp Used	-	32.6134	\$ -
Excused	96.00	32.6134	\$ 3,130.89
Illness - Family	24.00	32.6134	\$ 782.72
Illness - Self	109.00	32.6134	\$ 3,554.86
Kelly Day	1,080.00	32.6134	\$ 35,222.47
Light Duty	-	32.6134	\$ -
Off Duty Injury	96.00	32.6134	\$ 3,130.89
Unpaid Leave	-	32.6134	\$ -
Vacation	1,968.00	32.6134	\$ 64,183.17
Work Comp	-	32.6134	\$ -
Totals	3,394.25		\$ 110,698.03

