

DeKalb Fire Department



August 2017 Report

DeKalb Fire Department

700 Pine Street
DeKalb, Illinois 60115

815.748.8460 phone
815.748.8497 fax

www.cityofdekalb.com/DFD.htm
www.facebook.com/dekalbfire

Training

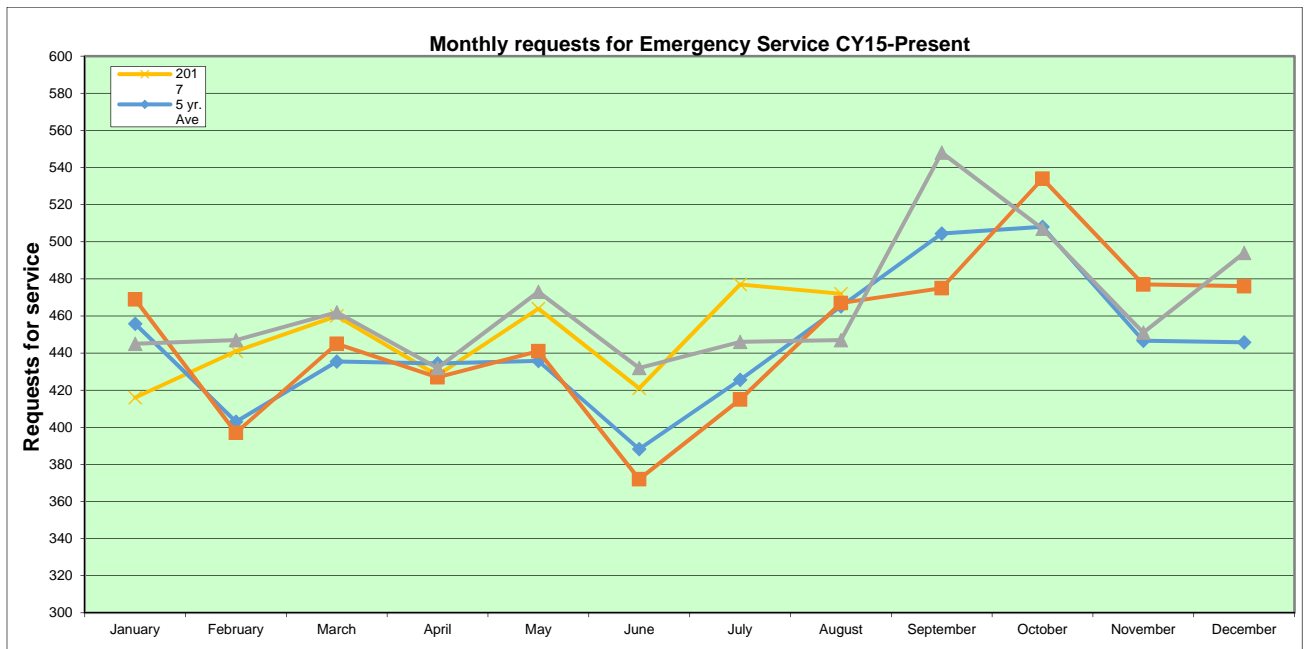
DeKalb firefighters spent 1781.05 hours training during August 2017. Firefighters receive monthly fire training and bi-monthly hazardous materials and technical rescue training. Emergency Medical Technicians receive monthly EMS training.

Operations

The DeKalb Fire Department responded to 471 incidents in August 2017. Emergency medical requests accounted for 330 (69.91%) of the monthly total. The remaining 142 (30.09%) of the incidents were fire/rescue related requests.

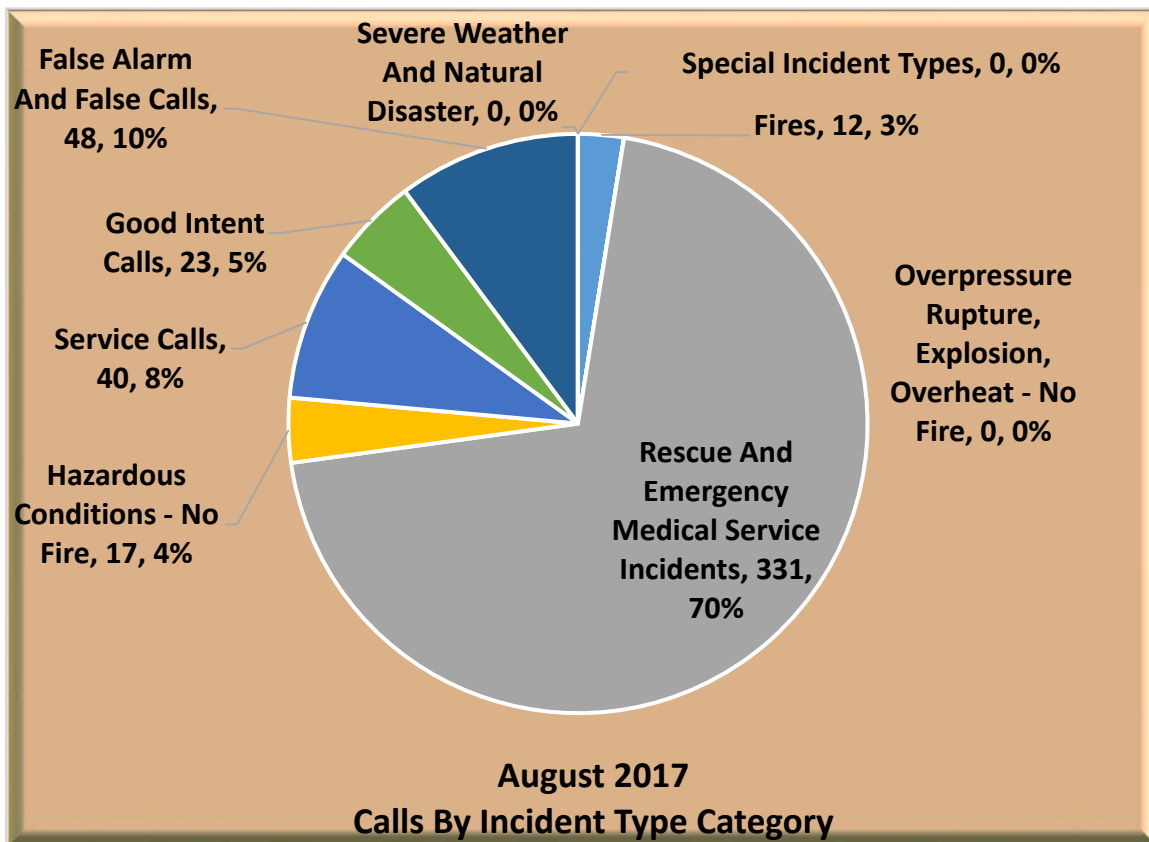
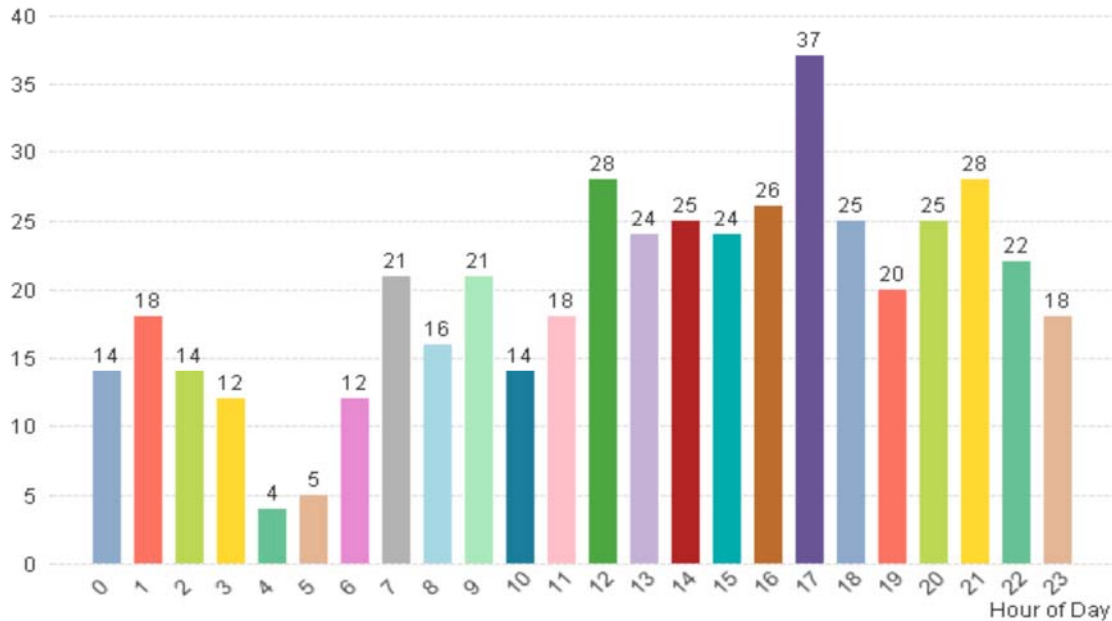
Mutual aid was provided to other communities on 11 incident and was requested by DeKalb for 4 total incident1.

	<u>Jan</u>	<u>Feb</u>	<u>Mar</u>	<u>Apr</u>	<u>May</u>	<u>June</u>	<u>July</u>	<u>Aug</u>	<u>Sept</u>	<u>Oct</u>	<u>Nov</u>	<u>Dec</u>	<u>total</u>
2010	444	397	375	408	354	358	384	450	470	593	383	412	4964
2011	390	438	386	416	394	344	431	446	480	580	441	360	5096
2012	429	387	451	414	403	398	447	453	507	493	401	441	5205
2013	430	399	406	482	413	364	416	454	476	514	442	417	5209
2014	506	385	413	417	449	375	404	505	516	492	462	401	5325
2015	469	397	445	427	441	372	415	467	475	534	477	476	5392
2016	445	447	462	432	473	432	446	447	548	507	451	494	5584
2017	416	441	460	428	464	421	477	471					
5 yr.													
Ave	455	403	435	434	435	388	425	465	504	508	446	445	5343
2016	445	892	1354	1786	2259	2691	3137	3584	4132	4639	5090	5584	
2017	416	857	1317	1745	2209	2630	3107	3578					
diff	-29	-35	-37	-41	-50	-61	-30	-6					



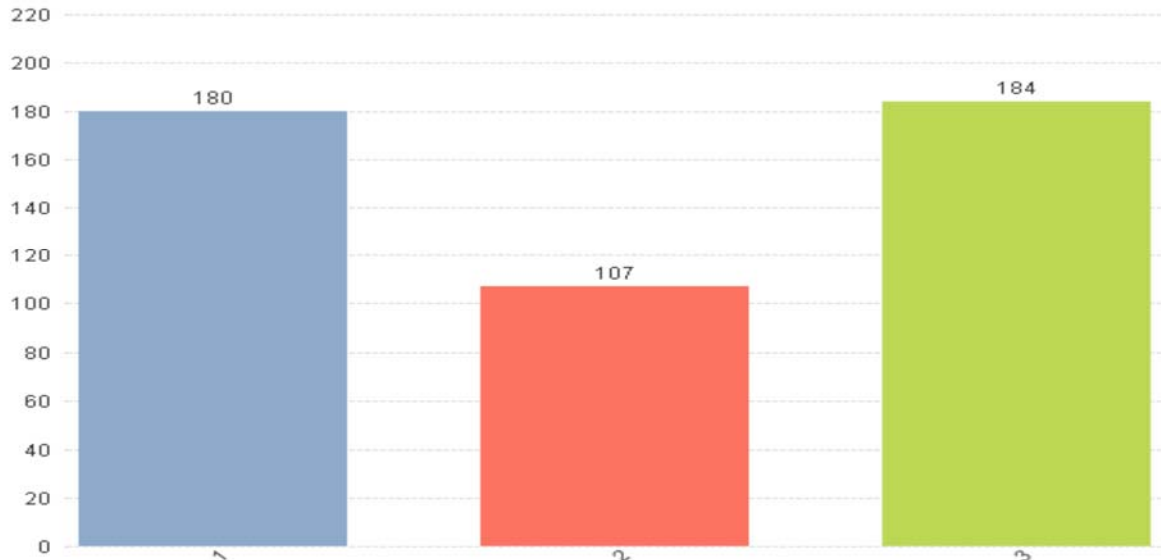
Calls by Hour of the Day

471 Total Incidents

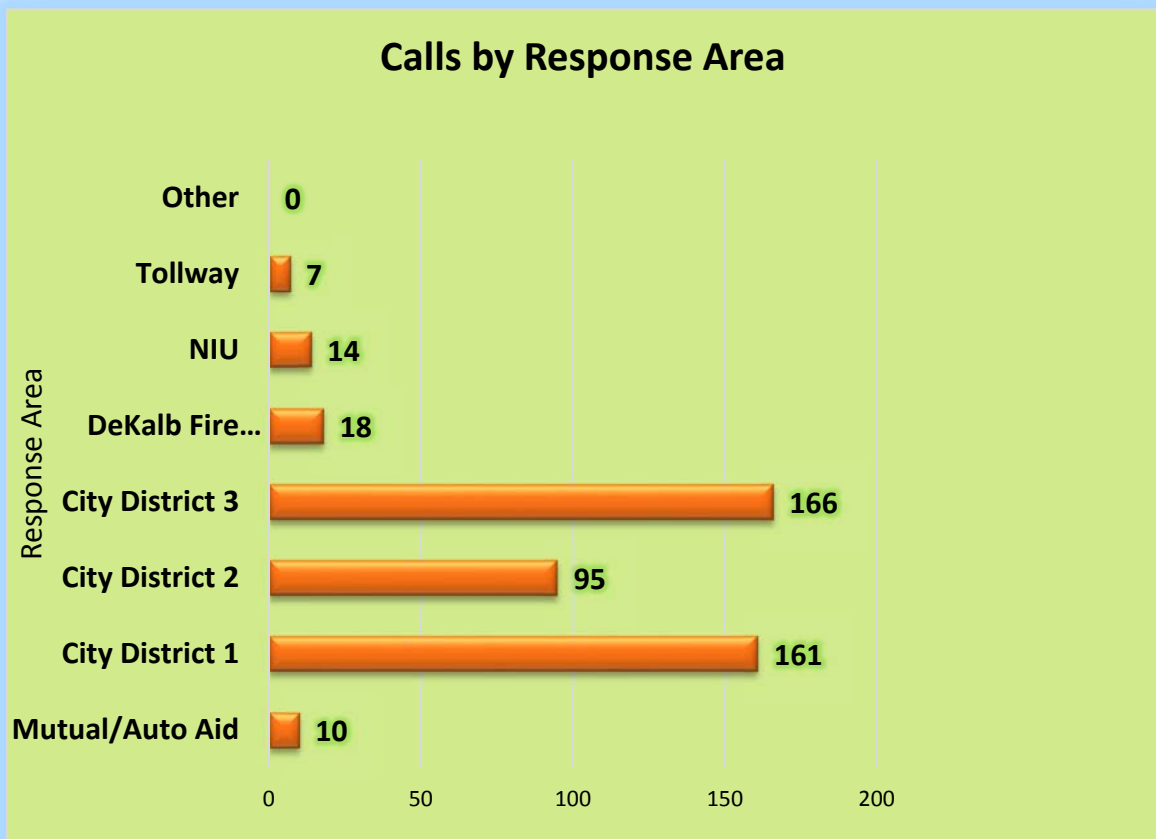


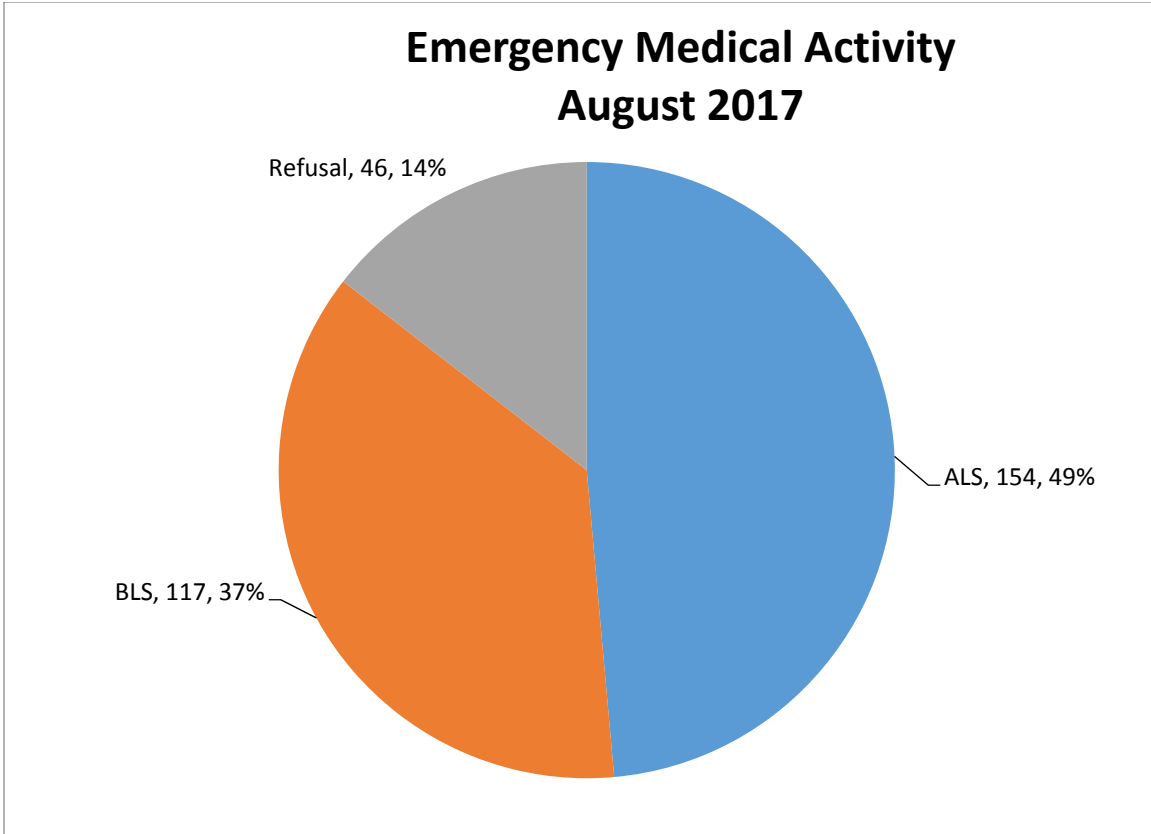
Calls By Station

471 Total Incidents

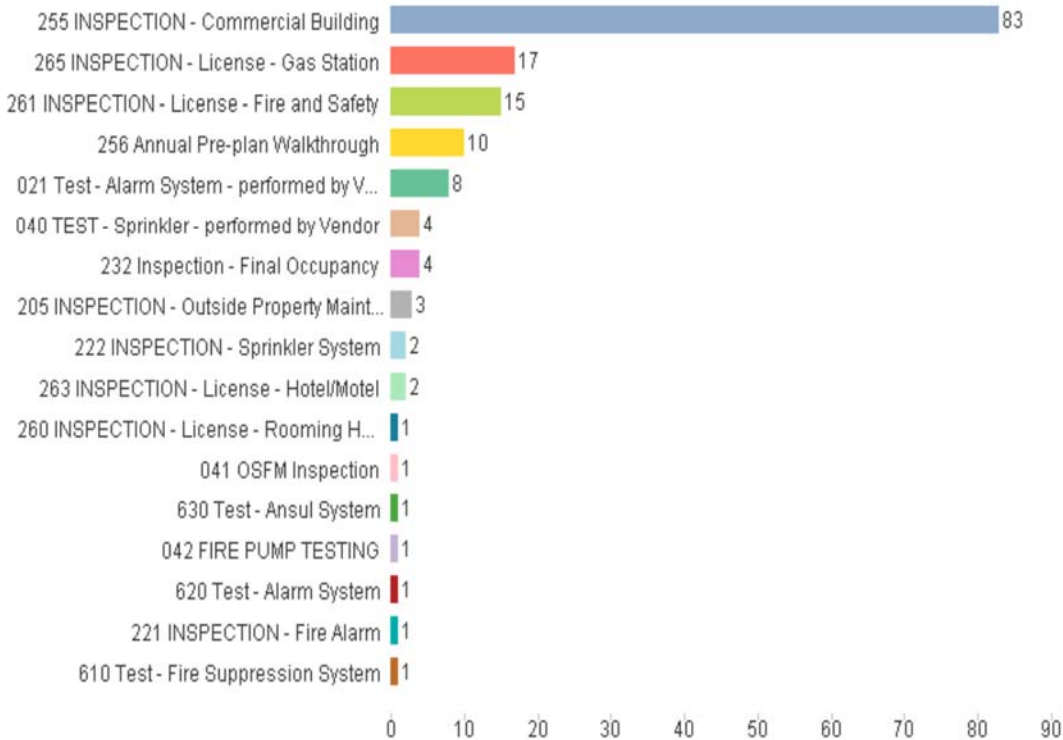


Calls by Response Area





Fire Prevention Inspections by Inspection Type



Overtime Comparison**August 2017**

	<u>Hours</u>		<u>Average OT Rate</u>	<u>Average Dollars</u>
Acting Pay	352.00	\$	3.332	\$ 1,172.97
Admin	12.50	\$	49.532	\$ 619.15
AM Person Needs	-	\$	49.532	\$ -
Early Arrival	15.50	\$	58.675	\$ 909.46
EMS	-	\$	49.532	\$ -
Fill In	217.00	\$	49.532	\$ 10,748.38
Fire	12.75	\$	49.532	\$ 631.53
Fire Investigation	-	\$	49.532	\$ -
Fire Inspections	29.00	\$	30.000	\$ 870.00
Haz Mat	24.75	\$	49.532	\$ 1,225.91
Holdover	16.50	\$	49.532	\$ 817.27
Pub Ed	26.00	\$	32.000	\$ 832.00
Radio	-	\$	32.000	\$ -
Recalls	118.75	\$	49.532	\$ 5,881.89
Safety	-	\$	49.532	\$ -
SCBA	-	\$	32.000	\$ -
Special Event	70.00	\$	41.000	\$ 2,870.00
TRT	40.75	\$	49.532	\$ 2,018.42
Vehicles	<u>102.00</u>	\$	40.000	<u>\$ 4,080.00</u>
Totals	1,037.50			\$ 32,676.98

August 2016

	<u>Hours</u>		<u>Using FY17 OT Rate for Direct Comparison of Dollars</u>	<u>Average Dollars</u>
Acting Pay	407.50	\$	3.332	\$ 1,357.91
Admin	4.00	\$	49.532	\$ 198.13
AM Personnel	2.00	\$	49.532	\$ 99.06
Early Arrival	13.00	\$	58.675	\$ 762.78
EMS	2.00	\$	49.532	\$ 99.06
Fill In	556.25	\$	49.532	\$ 27,552.01
Fire	8.50	\$	49.532	\$ 421.02
Fire Investigation	24.25	\$	49.532	\$ 1,201.14
Fire Prevention	-	\$	30.000	\$ -
Haz Mat	14.25	\$	49.532	\$ 705.83
Holdover	14.00	\$	49.532	\$ 693.44
Pub Ed	23.25	\$	32.000	\$ 744.00
Radio	7.75	\$	32.000	\$ 248.00
Recalls	68.25	\$	49.532	\$ 3,380.54
Safety	-	\$	49.532	\$ -
SCBA	-	\$	32.000	\$ -
Special Event	103.75	\$	41.000	\$ 4,253.75
TRT	-	\$	49.532	\$ -
Vehicles	<u>27.25</u>	\$	40.000	<u>\$ 1,090.00</u>
Totals	1,276.00			\$ 42,806.68



Time Off Comparison

August 2017	<u>Hours</u>	<u>Average Hourly Rate</u>	<u>Average Dollars</u>
Admin Leave	-	32.6134	\$ -
Bereavement	9.00	32.6134	\$ 293.52
Comp Used	-	32.6134	\$ -
Excused	178.00	32.6134	\$ 5,805.19
Illness - Family	25.75	32.6134	\$ 839.80
Illness - Self	120.00	32.6134	\$ 3,913.61
FMLA	-	32.6134	\$ -
Kelly Day	1,056.00	32.6134	\$ 34,439.75
Suspension	-	32.6134	\$ -
Light Duty	-	32.6134	\$ -
Off Duty Injury	72.00	32.6134	\$ 2,348.16
Unpaid Leave	-	32.6134	\$ -
Vacation	1,800.00	32.6134	\$ 58,704.12
Work Comp	-	32.6134	\$ -
Totals	3,260.75		\$ 106,344.14

August 2016	<u>Hours</u>	<u>Using FY16.5 Hourly Rate for Direct Comparison of Dollars</u>	<u>Average Dollars</u>
Admin Leave	-	32.6134	\$ -
Bereavement	-	32.6134	\$ -
Comp Used	24.00	32.6134	\$ 782.72
Excused	72.00	32.6134	\$ 2,348.16
Illness - Family	213.50	32.6134	\$ 6,962.96
Illness - Self	124.00	32.6134	\$ 4,044.06
FMLA	216.00	32.6134	\$ 7,044.49
Kelly Day	1,152.00	32.6134	\$ 37,570.64
Light Duty	-	32.6134	\$ -
Off Duty Injury	312.00	32.6134	\$ 10,175.38
Unpaid Leave	-	32.6134	\$ -
Vacation	1,824.00	32.6134	\$ 59,486.84
Work Comp	-	32.6134	\$ -
Totals	3,937.50		\$ 128,415.26

